

FREE

Yorkshire Reporter[®]

JULY 2023

Your Local Monthly Newspaper



**Leeds, We're Going
On A Bear Hunt**

SEE PAGE 22



**New Briggate Is Streets Ahead
Thanks To Heritage-Led
Improvement Work**

SEE PAGE 5



**£160m Investment Into Safer
And Better Journeys In Yorkshire
And The North East**

SEE PAGE 24



**Stay Away From Blue-Green
Algae And Keep Your Dogs Safe**

SEE PAGE 28



LUMBY
GARDEN CENTRE
& COFFEE SHOP

10% OFF

At Lumby Garden Centre

SEE OUR AD ON PAGE 13

CHRISTOPHER BROWN
PART OF BROWN & GOLD LTD

**GOLD PRICES
HIT
RECORD
HIGH!**



**SELL YOUR
GOLD**
OR USE IT TO BORROW CASH

See page 15

DREAM JOB

**Looking For An
Exciting Career In The
Jewellery Industry?**

Contact us;

0113 273 5000

Pickup Publications Ltd

Company No: 8476679

Opening Times:

Mon - Fri 09:00 - 17:30 & Sat 09:00 - 13:00

Advertising;

Offering a professional and friendly service

Email;

advertising@yorkshirereporter.co.uk

Public Notices, Operators Licences;

Very competitive rates

Email;

brian@yorkshirereporter.co.uk

News;

Have a local news story to share?

Email;

newsdesk.ids@yorkshirereporter.co.uk

Welcome to the Yorkshire Reporter

Now in our 10th year of bringing you the largest independent, free to pick up monthly newspaper in West Yorkshire, we are confident that inside you will find local news and stories relevant to you and your community, along with a wide range of interesting columns and features.

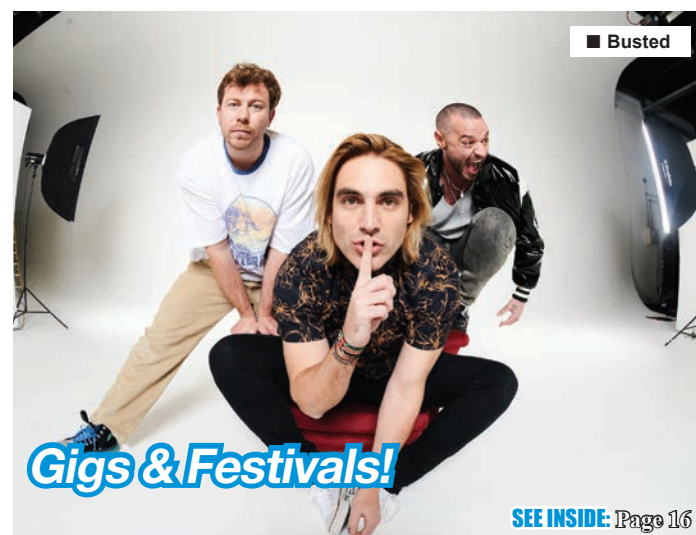
As a family owned business, we pride ourselves on supporting local community groups and businesses. With our team, you can be certain of a personal and professional service, so if you have something going on in your community that you want to shout about, or are thinking of advertising with us, please get in touch.

Lesley Ann, Editor

What's inside your paper



MUSIC



MOTORS



NEWS

TRAINS COULD BECOME 'DATA HOOVERS' TO HELP NORTHERN DELIVER A MORE SUSTAINABLE AND RELIABLE RAILWAY

SEE INSIDE: Page 4

MAYOR SECURES £1M FUNDING TO TACKLE ANTI-SOCIAL BEHAVIOUR

SEE INSIDE: Page 6

SECRET TO ESTATE'S FLOWER POWER REVEALED AS HISTORIC HOTHOUSE BURSTS INTO LIFE

SEE INSIDE: Page 10

WAKEFIELD ANIMAL HOSPITAL SAVES PUPP FROM DEBILITATING ILLNESS

SEE INSIDE: Page 29

PATHOLOGY TIME CAPSULE CREATED AS NEW LAB NEARS COMPLETION

SEE INSIDE: Page 32

WEST YORKSHIRE'S LARGEST MONTHLY INDEPENDENT FREE TO PICK UP NEWSPAPER

Available **FREE** to pick up from many selected supermarkets;

Sainsbury's

TESCO
Every little helps

TESCO
express

Sainsbury's Local

Also available **FREE** to pick up from selected;

**CROSSGATES
SHOPPING
CENTRE**

Costcutter

Boston Spa High St

NisaLocal

Garforth Main Street,
St Lane Roundhay,
Easterly Road
& Crossgates Road



Tailor Made
Hope Street, Morley



Hunslet, Oakwood,
Killingbeck & Colton

www.yorkshirereporter.co.uk

Fish Restaurants

Oceans Cross Gates

Murgatroyds Fish Restaurant Yeadon

Skyliner Fish Restaurant Colton

Coes Cross Gates

Key Fisheries York Road

Hiltons Fish & Chips Garforth

Wetherby Whaler - Guiseley

Wetherby Whaler - Wetherby

Portside Fisheries - Harrogate Rd

Garden Centres

Langlands A64, Garforth Garden
Centre, Selby Rd, The Arium,
Thorner & Lumby Garden Centre
& Coffee Shop, South Milford

**Wetherby
Newsagent's**
20 Market Pl, Wetherby

FREE Yorkshire
Reporter
Your Local Monthly Newspaper

AVAILABLE FROM OVER 500 OUTLETS EVERY MONTH

Distributed throughout
Leeds & surrounding areas

Bringing you local news, stories & features
plus much much more for over 10 years





Leeds Collaborating With UK Business Leaders To Help Unlock Green Home Upgrades

Leeds City Council is working with some of the country's biggest firms to address barriers that prevent households from accessing energy-saving green home upgrades.

The council has been part of a major national partnership, the Local Low Carbon Accelerator (LLCA) initiative, to explore how the public and private sectors can work together to speed the uptake of insulation and other technologies that make homes healthier, more environmentally friendly, and cheaper to live in.

The LLCA was established by four members of the Prime Minister's Business Council: Lloyds Banking Group, Octopus Energy, National Grid and Shell.

As part of the initiative, Leeds developed and shared recommendations that will help other authorities across the country to overcome demand-side barriers and unlock finance for upgrading (or 'retrofitting') residential properties.

Following the conclusion of the LLCA, the council will continue to work with partner organisations including Lloyds Banking Group as part of work to develop a 'one-stop shop' for green home improvements.

Leeds City Council CEO Tom Riordan CBE hosted a roundtable discussion, chaired by the Leeds-based UK Infrastructure Bank CEO John Flint, at the Civic Hall to discuss next steps with senior executives from some of the country's biggest finance, housing, and energy companies as well as leaders from government departments and other local authorities.

The partnership also shared insights and lessons learned from Leeds' work with dozens of attendees from across the public and private sectors at an online event following the meeting.

Leeds City Council's involvement in the LLCA initiative supports the aims of its Net Zero Homes Plan, unveiled earlier this year, which set out blueprints for how the local authority could work with

partners to install low-carbon heating and tackle heat loss from the city's residential buildings.

Better insulating Leeds' buildings to reduce heat loss has several benefits that include cutting the city's carbon footprint and tackling fuel poverty. One in six Leeds households were classed as living in fuel poverty in 2020, but recent research suggests this figure could now be significantly higher.

Since the Net Zero Homes Plan was announced in March, the council has secured nearly £200,000 from the government's Green Home Finance Accelerator fund to develop a 'property-linked' finance product, in partnership with Arup and Lloyds Banking Group, which will complement plans to launch its one-stop-shop service that will enable local homeowners and landlords to get trusted, tailored advice on the benefits of different green upgrades.

Meanwhile, work to build energy-efficient new social housing and to retrofit existing council homes has continued and an innovative space technology to identify homes leaking the most heat has recently been trialled in Leeds.

Tom Riordan CBE, Chief Executive Officer at Leeds City Council, said:

"Retrofitting homes is a huge opportunity to address the city's three priorities: improved health, zero carbon, and inclusive economic growth.

"As a council, we're investing more than £100 million to help make our own housing stock fit for the future, but to make the fastest progress on net zero and realise the many benefits of retrofit as fully as possible then it is vital that we work in partnership with others on a cross-sector basis.

"Leeds City Council is proud to be part of the national Local Low Carbon Accelerator initiative and we hope this collaborative work will have a positive impact in Leeds and far beyond our city borders."

John Flint, Chief Executive Officer at the UK Infrastructure Bank, which is based in Leeds said:

"The Bank supports local authorities through providing advice to help get infrastructure projects off the ground, and finances projects which support the UK's transition to net zero, create jobs and generate growth. It is vital that the public and private sector work together to overcome the barriers to decarbonising local infrastructure, and it is really positive to see that in action at the local low carbon accelerator in Leeds."

KITCHENS • BATHROOMS • BEDROOMS

www.designhousegroup.co.uk



FREE

EXPERT DESIGN SERVICE!

Get In Touch To Book Your
Appointment Today

KITCHENS BATHROOMS BEDROOMS

- Quality Designer Furniture
- Installation By Our In-House Team Of Experts
- 100% Satisfaction Guaranteed

Why Design House?

- 70 - 5* Google Reviews
- Fully Project Managed Service
- Rated As One Of The Top Three Showrooms In Leeds
- All Work Fully Guaranteed
- Fully Bespoke, Made To Measure Kitchens And Bedrooms

23 STANNINGLEY ROAD, LEEDS LS12 3AS

● 0113 263 72 80 ●

Design
house
we're the experts!



First look at the e-bikes coming to Leeds this autumn as scheme is given green light!

The new e-bikes coming to Leeds have been revealed, following the final green light for the public e-bike hire service to launch this autumn.

Leeds City Bikes will be the first fully electric public bike hire service in the UK, enabling more people to cycle short journeys.

The £2.86 million scheme will see e-bikes for hire at docking stations in the centre, and along key routes to the south and north-west of the city, before expanding to other areas.

It will be designed, developed, and delivered by British e-bike hire operator Beryl, in partnership with Leeds City Council, and has been made possible thanks to funding secured through the West Yorkshire Mayoral devolution deal.

The scheme was given the final green light at the end of May

when members of the Combined Authority's Transport Committee approved the funding in full.

Subject to further funding, it is hoped the Leeds e-bike hire service will be the first of many to be rolled out across West Yorkshire in the future.

Councillor Helen Hayden, Executive Member for Infrastructure and Climate, said:

"We want Leeds to be a city where you don't need to own a car and a key part of that is expanding and supporting our cycling network. Cycling is a great way to travel for short journeys, as well as long, and this proposal will make it easier for people to make that change.

"We know that compared to conventional push bikes, e-bikes are an easier access point for new users including older people, women, people with limited physical strength, people who have limited cycling confidence or experience and people who are looking to

take up cycling. I hope that Leeds City Bikes will encourage more people to try cycling without the investment of buying their own bike."

Tracy Brabin, Mayor of West Yorkshire, said:

"Bringing an e-bike hire scheme to our region was one of my Mayoral pledges and I'm excited we're using bikes named after Leeds' cycling legend Beryl Burton.

"We want to grow our economy, connect people with opportunities and tackle the climate emergency.

"A reliable, inclusive transport network, which puts walking and cycling at the heart of our everyday journeys, is key to this."

Philip Ellis, CEO of Beryl, said:

"We're delighted to be working in partnership with Leeds City Council and the West Yorkshire Combined Authority to encourage as many people as possible to switch to more sustainable transport.

"We have a proven track record of working in partnership with cities and in consultation with communities and key stakeholders to deliver successful services that play a crucial role in integrated urban transport systems.

"Our vehicles are not only good for the environment, they're also fun, easy to use and cost-effective, removing the need for vehicle ownership expenses such as fuel, tax, MOT, storage, parking and maintenance."

About Leeds City Bikes

E-bikes are helping more people reap the rewards of cycling and the service will enable residents, students, workers and visitors to make the most of Leeds's growing cycling network.

Initially an estimated 300 e-bikes will be available from docking stations at key locations.

The service will also incorporate tricycles and e-cargo bikes.

Leeds City Council and the Combined Authority will be working closely with accessibility groups, communities, and other key stakeholders to ensure as many people as possible can access the service.

This work is part of the Connecting Leeds Transport Strategy to make Leeds a city where you don't need a car.

The service is being funded by the Combined Authority through its Transforming Cities Fund programme, which is aimed at making it easier for people to walk, cycle and use public transport.

£60m Project At Yorkshire Water's Knostrop Treatment Works To Reduce Phosphorus Entering River Aire

Yorkshire Water is investing £60m at its Knostrop wastewater treatment works to reduce the amount of Phosphorus present in treated wastewater returned to the river Aire.

The site is the largest treatment works in Yorkshire, treating the wastewater of almost one million people at a rate of 5,600 litres per second. Enhanced Biological Phosphorus Removal (EBPR) processes are being introduced into the biological treatment stage into the site, with a solids removal plant built to treat the final effluent before it is returned to the environment.

EBPR is a sustainable way of removing Phosphorus and relies on the selection of organisms to remove large amounts of Phosphorus from wastewater, significantly reducing the levels of phosphorus in the effluent.

Yorkshire Water's partners Stantec and Ward & Burke are completing the scheme as part of the utility company's Partnership for Yorkshire.

Rachael Fox, head of programme delivery at Yorkshire Water, said: "We are committed to improving water quality in the rivers across our region. One of the key focuses is the reduction of Phosphorus entering rivers in the treated wastewater we return to the environment. Reducing Phosphorus levels can make a real difference to water quality in our rivers.

"This project is a significant part of a £790m investment by 2025 in Phosphorus removal. Knostrop is our largest treatment works and handles wastewater from almost one million people in Leeds and surrounding areas. The upgrade of the site to include EBPR will significantly reduce the Phosphorus levels in the Aire, benefiting the watercourse and the wildlife within."

The £60m upgrade will ensure the site complies with the Water Framework Directive and reduce levels within the treated wastewater to 0.4 mg/l Total Phosphorus and 4 mg/l Total Iron content.



Northern is looking to equip as many as 40 of its trains with kit that will enable them to become 'data hoovers' to help transform the way the rail network is maintained.

The special trains, which would still operate public services, would travel the network and feed information about the track and surrounding infrastructure to Network Rail.

Horizon-scanning LIDAR cameras, thermal imaging software and HD CCTV footage would all be used to record infrastructure defects, environmental factors and maintenance issues.

Every night, the train would perform a 'digital handshake' so the information captured can be downloaded and analysed.

The scheme is part of Northern's Intelligent Trains programme, which was first announced in 2022 and is a collaboration with Network Rail designed to help make journeys by rail safer, more reliable and efficient.

Rob Warnes, strategic development director at Northern, said: "We have always sought ways to do things smarter, safer and more efficient.

"Each of our trains travel, on average, 100,000 Km around the North of England every year and that presents an amazing opportunity for data capture.

"We would only need 40 of our fleet of 335 trains to be fitted with this technology to regularly sweep our entire network, which spans 3,000 Km of track.

"Those trains could provide engineers with data from the same section of track over many days, weeks and months – enabling maintenance issues to be identified and repairs scheduled whilst they are within operational safety standards."

Northern is in talks with Network Rail to secure funding for the programme, which it estimates would save tens of thousands of 'delay minutes' caused by urgent, unscheduled maintenance each year.

For their work in this area, Northern picked up the award for 'in service infrastructure monitoring' in the Engineering and Safety category at this year's Railway Innovation Awards.

Northern is the second largest train operator in the UK, with 2,500 services a day to more than 500 stations across the North of England.

■ Councillor Jonathan Pryor and Councillor Helen Hayden at the site of the latest phase of work on Leeds's New Briggate High Street Heritage Action Zone programme



New Briggate Is Streets Ahead Thanks To Heritage-Led Improvement Work

Work is under way on the latest phase of a major regeneration programme that aims to support local businesses and revive the traditional character of one of Leeds city centre's most historic streets.

The New Briggate High Street Heritage Action Zone (HAZ) programme – a partnership between Leeds City Council and Historic England – has provided grant aid for significant repairs and refurbishments to a row of shops and commercial units opposite Leeds Grand Theatre.

The work – which includes the fitting of timber sash windows and the reinstatement of traditional design features to shopfronts – is expected to take about five months to complete.

This phase of the programme follows positive recent progress on other HAZ-funded improvements to New Briggate, including the restoration of stylish terrazzo paving at the entrance to the Grand Arcade.

The HAZ work in turn feeds into a wider transformation of the area that is designed to give shops and other independent local businesses an ideal environment in which to trade and flourish. Key elements of that wider transformation include:

- The council's pedestrianisation of the lower end of New Briggate to create a traffic-free space complete with trees, benches, 'street cafe' seating and a spruced-up entrance to the historic St John's churchyard;
- The delivery by the council of other enhancements to New Briggate's highway infrastructure, including wider pavements and new cycling facilities;
- Public realm improvements – including new surfacing and footways – on Merrion Street, which sits a stone's throw from New Briggate and plays an important part in the city centre's night-time economy;
- Opera North's completion of the £18m redevelopment of its buildings on New Briggate and the adjacent Harrison Street.

Councillor Helen Hayden, Leeds City Council's executive member for sustainable development and infrastructure, said:

"It's really exciting to see improvement work starting on these buildings, with the finished results set to make New Briggate an even more attractive place to live, shop and spend time.

"The Heritage Action Zone programme highlights the way that the council, alongside partners, can have a transformational impact on streets that we already know and love.

"By creating well-connected and people-friendly spaces across the city, we're shaping the kind of environment that will attract further investment and, with it, new jobs, homes and opportunities for all."

The HAZ's main remit is the delivery of a heritage-led regeneration of New Briggate through the use of government-funded grants for improvements to buildings and public spaces.

The current work on the shops and commercial units is being carried out using traditional materials and

the latest conservation methods, which in turn means the revamped buildings will fit neatly with the look of landmarks such as the Grand Arcade and St John's Church.

Similar improvements to other properties on New Briggate are currently in the pipeline, again thanks to funding from the HAZ programme.

Councillor Jonathan Pryor, Leeds City Council's executive member for economy, culture and education, said:

"As a council, we're determined to do everything we can to support our high streets and the businesses that give them life and vibrancy.

"We're also hugely proud of Leeds's heritage and the part its history continues to play in the thriving, fast-moving city we call home.

"The work on New Briggate combines those two ideas perfectly, with improvements that are designed to bring in more shoppers and visitors, but which are also in keeping with the area's storied past."

One of the most visible results of the programme to date has been the restoration of the Grade II-listed Grand Arcade's terrazzo pavement entrance, which had been showing serious signs of wear and tear.

The damaged and cracked paving was replaced by a flawless like-for-like design, with the work being carried out by Andrews Tiles and funded by a HAZ grant that was awarded to Grand Arcade owner ATC Properties.

Douglas West, property director at ATC Properties, said:

"The Grand Arcade is one of the city's most impressive and historic retail spaces and, as owners, we are always keen to give it the love, care and attention it deserves.

"We were therefore delighted to be able to work with Leeds City Council on the restoration of the terrazzo pavement outside our New Briggate entrance, with this refreshed area now providing a suitably-stylish approach to the arcade.

"It's also great to see continued progress on other improvements to New Briggate. For a local business such as ourselves, they represent exactly the sort of support that is welcome and valued."

Bryan Davies, who leads on the New Briggate High Street Heritage Action Zone for Historic England, said:

"It's great to see all this work under way and I'm looking forward to seeing the finished results.

"We hope that the repair and refurbishments of these historic buildings will help to generate new economic opportunities for both the resident and neighbouring businesses in New Briggate."

Recent enhancements to New Briggate's highway infrastructure were made possible by the permanent re-routing of buses to Vicar Lane as part of the £173.5m Leeds Public Transport Investment Programme.

The work on Merrion Street, meanwhile, marked the culmination of a lengthy series of improvements by the council to leading night-time economy destinations, with spots such as Greek Street, Lower Briggate and Call Lane all undergoing pedestrianisation or remodelling over the last 10 years.



Since 1946
Kettley's
HIGH QUALITY FURNITURE

SUMMER SALE!

MASSIVE 250,000 STOCK CLEARANCE EVENT



EVERY SINGLE ITEM REDUCED BY UP TO 50% OFF

**LARGE SHOWROOM
OVER THREE FLOORS**

FREE DELIVERY AND FREE DISPOSAL OF OLD FURNITURE



**FREE HOME DEMONSTRATION
SERVICE AVAILABLE**

OVER 25 SUITES ON DISPLAY. BEDS, BEDROOM, DINING & OCCASIONAL FURNITURE PLUS MUCH MORE

35-39 Ivegate, Yeadon, LS19 7RE | OPEN 9AM - 5PM MON - SAT

Tel - 0113 250 37 16

www.kettleysfurniture.co.uk



Mayor Secures £1m Funding To Tackle Anti-Social Behaviour

The Mayor of West Yorkshire, Tracy Brabin, has secured million-pound funding for a new pilot to tackle anti-social behaviour (ASB) across the region.

While the new initiative prepares to launch, people are being urged to have their say.

A survey has opened asking members of the public to feedback their experiences of ASB and share how they would like to see those responsible make amends.

The trial will see a range of tailored services for adults and children trialled to benefit victims.

This includes completing unpaid work, repairing damage caused by their actions, and the option of restorative justice, where the victim can communicate with the person responsible for the crime.

Mayor Brabin, said: "We are determined to make West Yorkshire a safer place to work, live and raise a family, so we're tackling the issues that really matter to people.

"Anti-social behaviour can plague communities. This new pilot aims to prevent it by working with offenders to understand and address the root causes.

"It is vital that we listen to our communities, so we want to hear from as many people as possible, who can share their experiences and help inform this important work."

Working in close partnership with West Yorkshire Police, HM Prisons and Probation Service, Youth Justice Services and our Voluntary, Community and Social Enterprise sector, the initiative seeks to recognise and prevent trauma, respond early, and mitigate harm.

Learning from the project will also improve the early intervention and prevention approach to ASB across the county.

Chief Inspector Alan Travis, who is leading on this project for West Yorkshire Police said: "We are working closely with WYCA and other key stakeholders on what will be a new pathway to deal with perpetrators of anti-social behaviour.

"This pathway will not only contribute to reparation for the communities affected by anti-social behaviour, but should also lead to a reduction in re-offending through education, rehabilitation, and restorative justice."

Restorative Solutions Directors, Tony Walker and Kate Hook, said: "Restorative Solutions have been delivering the Restorative Justice Service across West Yorkshire since 2018, and are delighted to be working with Mayor Brabin, her Office, West Yorkshire Police and other local partners on such an important pilot project.

In particular, we welcome the Mayor's recognition of the value of Restorative Justice in reducing reoffending and changing behaviour as well as providing the opportunity to ensure the victim's voice is heard in the process."

Regional Probation Director, Lynda Marginson CBE, said: "Yorkshire and the Humber Probation Service is committed to working in partnership to prevent future victims of anti-social behaviour and keep our communities safe.

"Those committing anti-social behaviour will pay back to the community undertaking visible justice in their local communities. We know that by working collaboratively with our partners, better options will be achieved; enabling individuals to make positive changes to their lives and reduce further reoffending."

To find out more and have your say on the pilot, visit www.westyorks-ca.gov.uk/asb



Leeds City Council Urges Women To Have Their Say On Women's Safety In Leeds City Centre

Women who live, work and visit Leeds City centre are being encouraged to have their say in a survey which has been created to ensure that Leeds is a safer and more comfortable place.

The survey is an opportunity for women and girls to talk about their experiences and the results will inform the work the council and its partners do to make Leeds a safe place.

The survey can be found via;

<https://surveys.leeds.gov.uk/s/OWA2023>

It's not a reporting tool and any experience stated will not be reported to the police. If people need to report a crime, they should call 101.

Non-binary people and people who identify as a woman are also welcome to partake and share their views.

Councillor Debra Coupar, Leeds City Council's executive member for resources with responsibility for Safer Leeds, said:

"We have a firm commitment in Leeds to ensure that the city is a safe place for all women and girls. We've got many great initiatives already happening in Leeds to put an end to violence and harassment, including the Ask for Angela campaign which has over 600 bars and restaurants already signed up to and the successful

women's night safe bus, located outside the Corn Exchange every Saturday evening. However, it's now crucial that we hear from as many women and girls, from all backgrounds, faiths and religions and who use or live in our city centre to share their experiences so we can shape the future of our city."

Emily Turner, Project Manager at Women's Lives Leeds, said:

"Building on the successful Women's Safety Survey by Women's Lives Leeds in 2021, this is a vital opportunity for us to see the city centre through the eyes of the women who work, visit and live in it. Along with our partners at the council, we prioritise listening to the realities of the feelings and experiences of safety for women in Leeds.

The work that the Women and Girls Alliance Leeds do, alongside our partners, to tackle violence against all women and girls in the city centre will be shaped by the responses we receive, so it's important they have autonomy in the decisions made to their daily lives.

"We have an incredible amount of responses so far and the more that women share the link, the better chances our community gets to have all of their voices heard."

West Yorkshire Police - Warning Issued Over Use of 'Gel Blasters'



West Yorkshire Police has issued a warning after a number of anti-social behaviour incidents involving so-called gel blasters or gel guns in recent weeks.

The Force has received reports of people being hit by discharges from the gel guns, which fire pellets containing gel or water, and are sold as toys.

A number of arrests have been made across West Yorkshire as a result of gel guns being discharged in a reckless or anti-social manner.

And Section 59 warnings have also been issued against suspects who have been discharging them from vehicles.

T/Assistant Chief Constable Ed Chesters said: "We have seen a number of reports of incidents across West Yorkshire where people are being hit by gel or water pellets."

"Luckily, nobody has been seriously injured, though they do have the potential to cause injury.

"These gel guns are proving to be a nuisance in our communities and I would urge anyone who is thinking of using them recklessly or anti socially to think again as they may face arrest."

Neighbourhood officers are also visiting places which sell pellet guns to remind owners of their responsibilities in selling these items.

Though they are not solely being used by children, parents are being urged to take particular care over how their children are using them.

T/ACC Chesters added: "I'm also concerned that, due to their appearance, some of these items, if used irresponsibly, could potentially be mistaken for real firearms. This can cause fear and alarm to people. There is no place for imitation firearms in our communities."

To report an incident to West Yorkshire Police call 101 or go online at www.westyorkshire.police.uk/101livechat

BE PROUD TO BUY BRITISH!!

VISIT YORKSHIRE'S OWN SLEEP SPECIALISTS



All our bed frames and mattresses are produced in Yorkshire by National Bed Federation Manufacturers

SUPERB PREMIUM NATURAL COMFORT ELECTRIC BED COMPLETE WITH 1000 POCKET SPRING MATTRESS



SAVE
UP TO
45% OFF
MRP

- Wide choice of fabric and headboard options
- Small single, single and small double sizes available
- Registered disabled? Save 20% VAT when purchasing this bed
- Storage options available
- Simple to use economic hand help controls

CHECK OUT OUR BARGAIN BUY BED PACKAGES



SAVE
UP TO
40% OFF
MRP

- Package includes divan base, 2 drawer pack, headboard and mattress
- All sizes available including small double
- Tight for space? Mattress can be sold rolled if required
- Choice of fabric and headboard options
- Mattress can be bought separately

SUPERB CHOICE OF BRITISH MADE BEDROOM FURNITURE



SAVE
UP TO
33% OFF
MRP

- Wardrobes, chest of drawers, dressing tables and bedside cabinets available
- Comes fully assembled and ready to use
- Delivered to your room of choice if required
- Easy glide metal runners on all drawers
- Wide choice of colour, size and style options

MAKE A STATEMENT IN YOUR BEDROOM!



SAVE
UP TO
39% OFF
MRP

- Choose from a large range of luxury padded and upholstered headboards in Linens, chenilles and plush finishes
- All headboards available as standard strutted options
- Variety of styles to choose from
- Large selection of fabric and colours available
- Choose from a range of floorstanding headboards as a centrepiece for the bedroom
- Each headboard is a quality piece of furniture in it's own right
- Customise your bed with a matching end panel for your divan

NEED A MATTRESS TODAY? NO PROBLEM!!



SAVE
UP TO
43% OFF
MRP

- Always in stock our Dukes 1000 pocket mattress
- All sizes up to super king
- Rolled up Mattresses available to take away in your car
- Full warranty available on all mattresses
- Top quality product, affordable prices

ALL OUR DIVAN BASES ARE HAND MADE IN YORKSHIRE USING TRADITIONAL METHODS



SAVE
UP TO
30% OFF
MRP

- We only use sustainably sourced wood in our divan bases
- Great choice of fabrics and colours to choose from
- Our divan bases produced in 3 heights to allow easy access in and out of bed
- Choice of castors or more popular sliders
- Wide choice of drawer storage options
- Ottoman storage divans available in side lift or end lift options
- Try our latest remote control Ottoman storage solution



CROSS GATES ROAD, CROSSGATES, LEEDS LS15 7PE

TEL: 0113 284 0668 www.chilternmills.co.uk

OPEN 7 DAYS A WEEK: MONDAY TO SATURDAY 09:30 – 17:00 & SUNDAY 10:30 - 16:30 FREE CUSTOMER CAR PARK!





West Yorkshire Police Awards 2023

The excellent work and bravery of police officers, staff, volunteers and partners over the past year was showcased at the annual West Yorkshire Policing Awards ceremony.

This year's event took place at The Centenary Pavilion on Elland Road in Leeds and was hosted by BBC Look North presenter Phil Bodmer.

This year saw the introduction of two new awards – Tutor Constable of the Year and the Mary Ethel Danby Award – the latter in recognition of efforts by officers and staff towards tackling Violence Against Women and Girls (VAWG) in West Yorkshire.

Speaking after the event, Chief Constable John Robins QPM DL, said:

“The West Yorkshire Policing Awards celebrate the very best efforts of our police officers, staff and volunteers, as well as that of partners, in making West Yorkshire a safer place.

“Our judging panel once again faced an extremely difficult process in selecting the winners for each category, as the standard of nominations was again very high.

“These annual awards once again show that we have some of the very best people working at West Yorkshire Police, who continue to provide exemplary service for our communities despite the difficult times that policing continues to go through.”

West Yorkshire Mayor, Tracy Brabin, said:

“Every day police officers, staff, and volunteers across West Yorkshire work incredibly hard to keep us safe, often in the face of challenging circumstances.

“With these awards, we've heard stories of compassion, determination, and a shared commitment to making West Yorkshire a safer place for us all.

“As we come together to recognise their bravery and hard work, I'd like to say a heartfelt thank you to each and every one of them for their dedicated service.”

The full list of awards and winners was as follows:

Award for Extraordinary Public Service

Winner: Patrol Team 1 (Wakefield District) – for actions taken as the attending officers at the scene of a murder.

Adams McGill Award for Protection of Vulnerable Victims

Winner: Chief Inspector Alan Rhees-Cooper (Corporate Services) – for tenacity, compassion and enthusiasm in the area of missing people.

Outstanding Contribution to Equality and Diversity

Winner: Christopher Smith (Regional Scientific Support Services) – for commitment to advancing the Menopause theme throughout the organisation.

Dennis Hoban Award for Crime Investigation

Winner: Operation Tavernbridge (Kirklees District) – for their professionalism and meticulous approach to the investigation of an international paedophile group.

West Yorkshire Police Humane Award

Winners: PCs Tim Morton-Wiltshire and Kate Welton (Leeds District) – for their swift and decisive action in saving the life of a prematurely born baby.

Sharon Beshenivsky, PCSO of the Year Award

Winner: PCSO Ben Verdeyen (Bradford District) – for hard work in building strong links within the community.

Ian Broadhurst Trophy for Outstanding Contribution to Roads Policing

Winner: PC Paul Feather (Operational Support) – for dedication and commitment to West Yorkshire Police and an outstanding career in Roads Policing.

Special Constable of the Year Award

Winner: Senior Section Officer James White (Wakefield District) – for hard work and dedication to West Yorkshire Police.

Volunteer of the Year Award

Winner: Dudley Martin (Chaplaincy) – for professionalism and leadership as Volunteer Lead Chaplain for West Yorkshire Police.

Colin Cramphorn Trophy for Contribution to Neighbourhood Policing

Winner: PC Toni Daniels (Leeds District) – for work within Neighbourhood Policing and the creation of a charity for parents dedicated to tackling crime.

Solving Problems with Partners Award

Winner: Hirsts Yard Partnership Team (Leeds District) – for working in a multi-agency partnership which has contributed to making Leeds City Centre a safer place in the night-time economy.

Award for Outstanding Leadership

Winner: Ramona Senior (Regional Organised Crime Unit) – for leadership, management, direction and drive to West Yorkshire Police's response to Serious and Organised Crime.

Police Bravery Award

Winner: PC Aynsley Ward (Bradford District) – for selfless and brave actions in apprehending two persons in possession of knives while off-duty.

Award for Innovation in Policing

Winner: Digital Forensics Unit Transformation Project (Protective Services Crime) – for their achievement in delivering this project.

Team of the year

Winner: RaSSO Gatekeeper Team (Corporate Services) – for the support they provide to officers and staff who investigate rape and serious sexual offences, as well as the wider Criminal Justice agencies.

Lifetime Achievement Award

Winner: PC Simon Haywood (Kirklees District) – for outstanding and distinguished service which included nearly 37 years on the frontline.

Student Officer of the Year

Winner: PC Hayley Oldfield (Learning & Organisational Development) – for dedication and commitment which resulted in a man's life being saved.

Tutor Constable of the Year

Winner: Detective Constable Charlotte Buxton (Learning & Organisational Development) – for dedication and commitment to the tuition of colleagues within West Yorkshire Police.

VAWG – Mary Ethel Danby Award

Winner: Detective Inspector Zaheer Abbas (Calderdale District) – for innovation and commitment to improving outcomes for victims of domestic abuse.

Charity In Search For The UK's Walking Champions

Living Streets is looking for inspiring entrants for the Charles Maher Award - Walking Champion 2023.

The UK charity for everyday walking is asking people to nominate individuals, local groups or organisations who have campaigned to get more people walking and wheeling in their area.

The award was set up in honour of Charles Maher, a campaigner and longstanding supporter of Living Streets – formerly the Pedestrians Association – and nominees are judged on their creativity and the level of impact they have had.

Stephen Edwards, Chief Executive, Living Streets said:

“People across the UK are doing incredible things to improve the places we live for walking and wheeling – and they deserve recognition. Many individuals, groups and organisations work tirelessly to make our streets safer and more attractive so that people can be active and feel connected to our communities.

“You might know someone campaigning for safer streets for people using a wheelchair or pushchair, a parent who's helped make walking to school safer for local families, or an organisation encouraging older adults to get out and about. Whoever it is, we want to hear about them.”

Individuals, local groups, organisations or local authorities can self-nominate themselves or others for the Living Streets Charles Maher Award.

The deadline for nominations is midnight on 29 July 2023.

The nomination form is on www.livingstreets.org.uk/maher

Leeds Entrepreneur Announced As Great British Entrepreneur Awards 2023 Finalist



Leeds-based CEO, Neil Moles, has been recognised for his entrepreneurial spirit as he is named as a finalist in the Great British Entrepreneur Awards.

Neil is CEO of Progeny, a national professional services company headquartered in Leeds, offering Chartered financial planning, investment management, tax services, property, HR consultancy and legal counsel.

Now in its 11th year, The Great British Entrepreneur Awards celebrate the outstanding individuals and businesses that drive innovation, generate employment opportunities, and contribute to the growth of the UK economy.

Neil Moles, comments:

"Entrepreneurship is a major driver in economic growth and innovation and I'm proud to be recognised amongst my peers by the Great British Entrepreneur Awards.

At Progeny, we're transforming how people receive and value professional advice with our integrated, multi-disciplinary approach, as well as expanding our footprint into international territories, including Dubai, Hong Kong and Singapore. Launching into the international space brings huge opportunity and my vision is to create the first global professional services business."

Founder of The Great British Entrepreneur Awards, Francesca James, says:

"Every year I am blown away with the quantity and quality of applications we receive, and this year is no exception. The Great British Entrepreneur Awards receives thousands of applications annually and the competition is tough. I am truly inspired by the remarkable accomplishments of this year's finalists. Their collective achievements of generating over £2.7 billion in turnover and employing over 33,000 people demonstrate the exceptional impact they have made in their industries and communities. These entrepreneurs exemplify the spirit of innovation, resilience, and growth that drives the entrepreneurial landscape in the UK."

The awards ceremony will take place on November 20th 2023 at London's Grosvenor House.

For the full list of finalists, visit;

www.freshbusinessthinking.com/great-british-entrepreneur-awards/2023-shortlist



Transform Lives And Make A Difference:

The Fulfilling Journey Of A Teaching Role With The White Rose Academies Trust

Teaching is a profession that empowers individuals to shape the future by imparting knowledge, instilling values, and inspiring young minds. It is a career path that not only offers a sense of purpose but also provides countless rewards and opportunities for personal and professional growth.

If you are looking for a fulfilling and impactful career, why not consider becoming a teacher at the White Rose Academies Trust in Leeds, which comprises three secondary academies and one primary academy, employing over 500 dedicated staff and educating almost 4000 students.

In recent years, the trust's academies have grown in popularity and this year received their highest ever numbers of first-choice preferences. This demand has been recognised by the Local Authority, who have provided funding for considerable expansions to the buildings at two of the trust's secondary academies – Leeds City Academy and Leeds West Academy. The Leeds West Academy

expansion programme is complete with the already state of the art building now also including new and bespoke classrooms, extended PE changing facilities, extended canteen, and an impressive floodlit outdoor pitch. Student capacity has been increased to over 1500 places, making it one of the biggest academies in the area. The Leeds City Academy expansion will begin shortly.

Why Choose The Teaching Profession?

Few professions have the potential to make a lasting impact on individuals' lives in the way that teaching does. As an educator, you have the power to unlock a student's potential, ignite their curiosity, and foster a lifelong love for learning.

Teaching is a profession that encourages lifelong learning and personal growth which is why the White Rose Academies Trust is committed to supporting the professional development of its staff. Investing in their teams across the organisation is a key focus for

the Trust and all professionals have access to a carefully curated programme of CPD to support them to fulfil their personal and professional ambitions. Whether you are a newly qualified teacher, an experienced educator or you are only just starting to consider a career in teaching, you will have access to a wide range of excellent CPD opportunities, these may include apprenticeships, post-graduate degrees and professional qualifications. In addition, the trust's staff wellbeing and benefits programme provides numerous benefits such as a reward and recognition framework, Techscheme, Bike2Work scheme, eye test vouchers, Local Government Pension Scheme, Employee Assistance Programme, Wellbeing Wednesdays (free breakfast), opportunities for flexible working, from term time only, part-time and job share working where possible.

Sarah Carrie, Executive Principal of the White Rose Academies Trust said "We are committed to achieving an organisational culture which prioritises staff welfare and wellbeing and values stakeholder engagement to inform and improve our work."

We strongly believe in the power of collaboration and professional generosity to facilitate highly effective school-to-school support. As an organisation we seize every opportunity to share best practice, celebrate our strengths and learn from our mistakes. We are outward facing and actively look to engage with organisations within the education sector from whom to learn and further develop our practice".

By joining the White Rose Academies Trust, you will have the opportunity to impact the lives of almost 4000 students and work alongside a dedicated team of professionals. Becoming a teacher is a rewarding and meaningful career choice that allows you to change lives, make a difference, and shape the future.

Visit www.whiteroseacademies.org/careers to view the current roles available which will allow you to inspire the next generation of leaders, innovators, and changemakers.



WHITE ROSE ACADEMIES

Oceans

AWARD WINNING FISH & CHIP TAKEAWAY

For takeaways and delivery call: 0113 260 6671

VOTED YEP
CHIP SHOP
OF THE
YEAR
2015

VOTED BEST
CHIPPY LEEDS
BY LEEDS LIVE
VOTERS APRIL
2023



EAT IN OR TAKEAWAY



GLUTEN FREE BATTER AVAILABLE ON REQUEST

ORDER
ONLINE

www.oceanscrossgates.co.uk
44-46 Austhorpe Road, Leeds LS15 8DX

Opening Hours: Mon CLOSED - Tues - Thurs 11:00 - 20:30
Fri 11:00 - 21:00 - Sat 11:00 - 20:00 - Sun CLOSED





POLITE - PROFESSIONAL - PROMPT

► **LOCAL**

► **REGIONAL**

► **NATIONAL**

► **BUSINESS TO BUSINESS**

► **RESIDENTIAL**

**YORKSHIRE
BASED**

**FULLY
INSURED
& DBS
CHECKED**



► **SMALL PACKAGES**

► **MEDICAL EQUIPMENT**

► **PATHOLOGY SAMPLES**

► **CONFIDENTIAL & LEGAL DOCUMENTS**

► **FILES & PASSPORTS ETC..**

► **BOILERS & PIPE FITTINGS**

► **PIPE WORK & DRAINAGE**

► **SITE TO SITE**

► **MANUFACTURING EQUIPMENT**

► **ENGINEERING PARTS ETC..**

FULL PALLET LOADS

MAX WEIGHT 980KG

MAX WIDTH 1.25M - MAX HEIGHT 1.2M

MAX LENGTH 1.6M

- THROUGH LOADS -

MAX LENGTH 2.2M - MAX WIDTH 1.05M

MAX HEIGHT 220MM

CALL FOR A FREE QUOTE

07850 285 195

PLEASE NOTE WE DON'T DO HOUSE REMOVALS OR WASTE!



■ Head gardener Mick Jakeman tends to the stunning Zonal Pelargoniums which have burst into life in the hothouse at Temple Newsam's Walled Garden

Secret To Estate's Flower Power Revealed As Historic Hothouse Bursts Into Life

It's a hidden horticultural gem where generations of gardeners have cultivated exotic fruits and blooms for more than 230 years.

Centuries ago the hothouse, tucked away at the top of Temple Newsam's Walled Garden, was used to ripen pineapples and grow colourful flowers for the aristocrats who lived at Temple Newsam House.

Now a new generation of gardeners are continuing their esteemed predecessors' green-fingered legacy, tending to and conserving a nationally important array of rare plants for the people of Leeds.

Originally built in the 18th Century, the lengthy greenhouse still features remnants of the original flues which were used to channel hot air around the structure and ripen fruit.

These are believed to have included pineapples, which were nurtured in nearby glasshouses and once seen as a huge status symbol in aristocratic circles, where they would be the centrepieces at social gatherings.

After a theft 1777, when 10 of his prized pineapple crop was stolen, Richard Taylor, gardener to Viscount Irwin, reputedly offered a ten guineas reward for information leading to the perpetrator.

The Taylor family, who lived in quarters in nearby Colton village, were head gardeners at the estate for generations and famously trained many young horticulturalists who graduated to work at other estates around the UK.

Today, the estate's cohort of gardeners' duties include conserving a number of national collections of plants including delphiniums and chrysanthemums.

They also carefully care for a stunning national collection of Coleus, grown for their colourful patterned leaves, and have even developed around 20 new varieties including one called "Temple Newsam".

Mark Darwell, Leeds City Council's estate officer said: "It's incredible to think you're looking after plants in the very same place they've been so carefully nurtured for hundreds of years. You can definitely feel that weight of history and the watchful eyes of the generations of expert gardeners who've gone before you while you work too."

"It's a completely unique place to work and when the flowers burst into life, it's probably one of the most beautiful places to be in Leeds. We're very proud of the work we do, and the fact we're continuing the legacy of those horticulturalists who laid the foundations for what we do today is a real privilege."

The hothouse is open to the public all year round and visitors can also explore the surrounding Walled Garden, which includes roses and a vegetable and herb garden and throughout the year hosts children's planting activity days.

Councillor Mohammed Rafique, Leeds City Council's executive member for climate, energy, environment and green space said: "The amount of diligence and dedication it takes to keep our parks and green spaces looking so beautiful is remarkable."

"In spring and summer we see the fruits of all that hard work, but our teams on site are working behind-the-scenes throughout the year and the stunning floral displays across Leeds are a credit to them all."

The Walled Garden and other gardens at Temple Newsam are free to visit. More information can be found at:

<https://museumsandgalleries.leeds.gov.uk/temple-newsam/see-and-do-at-temple-newsam/gardens-at-temple-newsam>

Leeds Unseen Talent Showcases 6 Decades Of Artwork In A Major Exhibition



Aire Place Studios Gallery in partnership with Ort Gallery and ICF presents the Agency of Realised Worlds.

An exhibition that celebrates the life work of the Artist Clem Archibald offers a first look at Clem's vibrant and bold paintings that span over 60 years. Clem is a skilled self-taught artist in his seventies who has lived in LS4 since arriving from St. Kitts aged 8 years old.

This exhibition is a collaboration between Artist Clem Archibald and Curator Sarah Francis which explores and showcases Archibald's unseen painting over six decades. Two different creatives, two different socio-cultural perspectives, with a shared sense of the different worlds realised through art

and making. The project has spanned 12 months, curating the stories and paintings that represent different stages of Clem's life and experiences. This is an autobiographical journey of an artist almost left behind by barriers in the cultural world, showcasing his unprecedented talent.

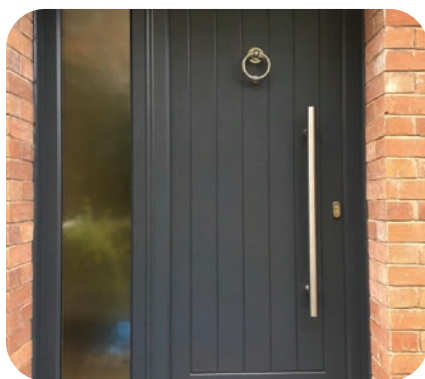
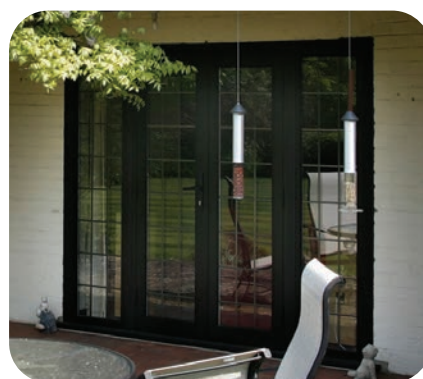
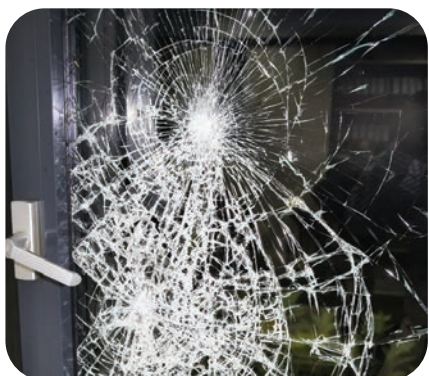
Curator Sarah Francis said, "Art has the power to transport an artist from a world they feel a sense of unbelonging into a world of their own imagination, of safety and where they can share their stories. A world where they can be their authentic selves without the fear of prejudice, and harm from others. A world that is unashamedly the WE we seek. These worlds we create carry transformative powers to be able to translate these stories into the real world, so that we can connect, relate, and be moved with exploration. Agency of Realised Worlds explores the talented work of Clem, a proud Leeds artist we should all be celebrating. His art is saturated in Leeds history and an untold personal connection which he explores in his paintings. I have been a privileged guest inside Clem's world and I am so thrilled to be permitted to showcase his paintings in this exhibition. His artwork should be in collections, and I hope that after 60 years this exhibition can form the start of his legacy and a shift in finding and platforming our hidden voices within Leeds."

This exhibition stems from Ort Gallery and ICF's Emergence(y) project for emerging curators, which Sarah Francis was selected to participate in in 2021. As part of the project, Francis undertook a period of research and development towards this exhibition with Clem Archibald. Emergence(y) was funded by Arts Council England.

The Exhibition is open until 25 August 2023.

Gallery visiting times: Wednesdays & Fridays (11am - 5pm). Please book ahead of your visit here;

www.eventbrite.co.uk/e/agency-of-realised-worlds-exhibition-tickets-648099371667

**Casement Windows****Flush Sash Windows****Vertical Sliding Windows****Bay/Bow Windows****PVCu Doors****Composite Doors****French Doors****Sliding Doors****Bi-fold Doors****Splashbacks****Table Tops****Secondary Glazing****Broken Glass Replaced****Mirrors****Glass Cut to Size****Misted Units Replaced**

**Leeds
Glass**



0800 996 1168
www.leedsglass.co.uk

Leeds Glass Windows Ltd 401A York Road Leeds LS9 6TD
T: 0113 248 8433 F: 0113 248 1649 E: info@leedsglass.co.uk



GARDENING

I'm Out In The Garden, Its Sunny Again, Oh Wait I Think They Have Forecast Rain!

July is an odd time of year in the garden, the first flush of summer flowering plants like alliums, lupins and delphiniums start to fade and gaps start appearing in the border. This is where the planning we did earlier in the year comes into play and why it is essential to carry a note book or cheap pocket diary and pencil with you whilst in the garden.

More so if you are new to gardening recording flowering times, jobs to do and plants that haven't done too well will help you create a unique diary of when there are gaps in the flowering calendar that need to be filled and what suits your garden. If you carry this note book with you when you are out and about you can also note plants or elements of gardens you see that you like. Its easy to forget little details when we are busy with work and family and there is nothing more frustrating than trying to remember a plant or garden feature you saw only a few days earlier.



As the garden moves towards the height of its summer display it is important to try and keep on top of jobs like weeding, removing faded flowers and dealing with pest and disease problems. The key is to break these jobs down into little tasks, for example wandering around the garden in a spare hour on a summers evening is more than enough time to do a little dead heading or pulling out the largest of those weeds. Pests and diseases can be a nuisance but there are a good number of organic sprays and treatments available now that give good control whilst having minimal impact on the environment.



■ Philadelphus

There are some shrubs that benefit from pruning at this time of year due to the fact that they are inclined to become very large and congested resulting in an unruly shrub dotted with flowers. Philadelphus, weigela and forsythia

are three examples. If your plant is established and quite overgrown then its a good idea to remove two or three of the oldest branches back to ground level, this will encourage new shoots that will replace them and repeating this every year will ensure that your plant remains healthy and in good shape. At the same time cut back any shoots that have flowered back to a side-shoot that has not flowered. It's a good idea to water and feed after pruning at this time of year as it helps the plant recover and continue growing.



Wisteria is a very attractive quite vigorous wall shrub but it can quickly get out of control producing large tangled, heavy plants that can damage fences and walls if left. Pruning in summer and again in late January (I will remind you), will ensure you have a well behaved plant with the potential to flower well. At this time of year the plant will have produced long whippy stems of new growth, these should be pruned back to about five buds from where they started to grow this year. The only exception is where you want to train the plant further along the support or wall. just carefully tie in the ones you want to keep. Water and feed after pruning, a general organic fertiliser is fine.



It's full on in the vegetable garden harvesting. Planting and sowing small batches spreads the cropping over a much longer season and avoids having say twenty cauliflowers all ready at the same time. I like cauliflower but not every day for two weeks. With most members of the cabbage family you can harvest before they are fully mature, small young cabbages or cauliflowers are delicious and great in stir fries or finely chopped in salads. Areas where you have lifted autumn planted onions or garlic are perfect for later crops, simply sprinkle a little general fertiliser and plant or sow salad leaves, pak choi, turnips or early varieties of peas, for late summer autumn harvest. If you are direct sowing into the vegetable plot, raised beds or pots don't let them dry out in the summer heat, especially in the first few weeks after sowing. Seed is small and it doesn't take much heat to dry the top inch of soil, this in turn dries the developing seed and kills any roots, check daily and ideally water in the evening when the day is cooler. In particularly hot weather it is a good idea to drape some shade netting over bent metal hoops so the emerging seedlings don't get scorched.

Happy gardening,

Martin

Next month, (don't neglect your strawberries, deal with lanky lavender and tending tomatoes.)



BY MARTIN S WALKER

Top Tip - Don't Discard Your Egg Boxes

The cardboard boxes designed for protecting and storing eggs are unique to their function although with a little thought they can be put to good use in the garden.

Saving seed from your favourite plant can be a little challenging as often finding a suitable receptacle to collect them in whilst rummaging in the garden is not so easy. Envelopes should be ok but have you ever tried to open an envelope whilst holding a small quantity of collected seed in one hand? Even if you have negotiated the first challenge often the envelope does not completely seal so fine seed find their way into your trouser pocket, most frustrating. In addition writing the name of the plant on the envelope can be a little tricky and carrying labels is just another thing to juggle.



An empty egg box could be the answer, each compartment is shaped so the seed will generally stay in the middle of the section, available in six or twelve section boxes means that you can collect from several plants. The lid provides a perfect labelling function, simply close the lid and write the name of the plant on the top of the box immediately above the section you have used. Generally an egg box doesn't fit in your pocket and is fairly stable so spillage is minimised.

The whole box (with its seed contents) can be stored in the fridge or a cool dark place to keep the seed fresh until sowing.

Cardboard egg boxes also provide a perfect home for overwintering insects such as ladybirds and lacewings, lid closed and placed in a dry location such as an open shed or porch where they will stay dry.



Most of the boxes used these days are made from compressed cardboard and are therefore biodegradable and a great addition to the compost heap.

Avoid using plastic egg boxes as they do not remain dry, and do not break down so recycle in the plastics bin.

Elite Paving

Driveways, Patios,
Fencing, Drainage &
General Groundworks

Call Lee for a **FREE**
no obligation quote

0113 293 46 79

07966 76 77 65

C&G Qualified



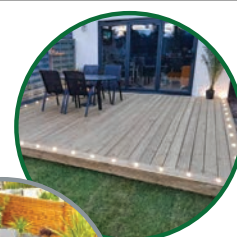
**ADVERTISE
YOUR LOCAL
BUSINESS**

**FROM £50
PER MONTH**

GARDENING - YOUR LOCAL TRADERS



- FENCING
- DECKING
- PERGOLAS
- SHEDS
- PATHS
- WALLS
- PATIOS
- SUMMERHOUSES



T 0113 217 00 67 M 07952 90 33 89

gwfencingleeds@gmail.com



Over 25 years of experience
in garden maintenance,
landscaping &
tree/shrub management

- Mowing, Commercial & Domestic
- Hedge Reductions & Trimming
- Rotovating
- Chemical Weed Control
- Lawn Care & Treatments
- Minor Landscaping
- Fencing

Areas covered:
North Leeds
East Leeds & Thorne
Wetherby &
surrounding villages

For a reliable and professional service at an affordable price, contact:

07858 68 79 98 / 07944 68 80 64

email - jjr1996@googlemail.com



**WOOD WISE
SERVICES LEEDS**

**FENCING AND LANDSCAPING
DOMESTIC AND COMMERCIAL
GROUNDS MAINTENANCE**

**BESPOKE GARDEN
FURNITURE**



GET A FREE QUOTE NOW!!



T - 0113 460 81 96 / 07983 80 78 76

E - WOODWISESERVICES@OUTLOOK.COM

W - WWW.WOODWISESERVICESLEEDS.COM



GARDENING - YOUR LOCAL TRADERS

www.lumbygardencentre.com

T: 01977 68 28 15

E: info@lumbygardencentre.com

**A: Leeds/Selby Road
South Milford
Leeds, LS25 5LE**

Opening times:

Mon - Sat: 9am - 5pm | Sun - 10am - 4pm

Coffee Shop: 9am - 4pm

- We are a traditional family-run garden centre and have been open since 1981
- Located just off Junction 42 of the A1(M), 5 minutes from Garforth, we have a large selection of gardening items, from plants, shrubs, bulbs, seeds, lawn care, pest control, furniture, fertilizers, logs, coal, tools, and other gardening essentials
- We carefully select our stock from local growers and nurseries, therefore ensuring superb quality at competitive prices

Allotment Members Discount

Just show your allotment card at the till.

*Covers most gardening goods**

Gardening Variety

We are the largest stockist of compost in the Yorkshire area including Peat Free & Peat Reduced.

Over 40,000 plants, shrubs, perennials, roses & trees on site.

Pots, gravel, aggregates, we have it all!

Fantastic selection of evergreen shrubs and perennials to keep colour throughout the year. Plants and shrubs that you just won't find at any other garden centre. Unbelievable Olives trees that bring a focal point to any garden.

Fantastic selection of garden furniture, Rattan sets, benches, Bistro sets, Parasols, Garden statues.

Visit Our Coffee Shop

Why not pop in and visit our coffee shop, serving hot meals, all-day breakfasts, sandwiches, snacks & drinks.

10% OFF*

With this Yorkshire Reporter advert

*Some Exclusions Apply

Antiques And Collectables

With David Oddy



■ David Oddy inside his shop

After over 40 years in the antiques business, I am sometimes amazed at what people have hidden away in attics, cellars, and garages.

An interesting story I have is from about five years ago. I received a phone call from a titled Lady living in Worcestershire. She had called me following a recommendation from a regular customer living in Harrogate, and the Lady in question lived in a small mansion with thirteen bedrooms. She told me she wanted to dispose of some of the contents and I was excited and intrigued to have a journey south to have a look.

I arrived at the appointed time to find the building completely overgrown with almost impenetrable brambles and bushes. After fighting my way to the rear servant's door, I was met by the Lady of the house. To say she was eccentric would be a large understatement, she was of the upper class in the

extreme and apologised that she had had to "let the butler go" and she would show me around the house herself.

We first went up a grand staircase to the top floor servant's quarters. It was an unbelievable sight with more holes in the roof than slates and it soon became apparent that rainwater had penetrated every floor of the building. As we went down through the floors it was quite obvious that all the beautiful Georgian furniture was damaged beyond repair.

When we eventually arrived in the main ballroom, I could not believe my eyes. It was full of taxidermy animals including four stuffed lions including the biggest male lion I have ever seen. It must have been 10ft long mounted on a large wooden plinth.



There was a full-size brown bear, a polar bear and cub, four full head tiger skin rugs and every conceivable type of rare wild cats – half of the planet's endangered species were in that room. Hanging on the walls were photos of this Lady and an entourage of servants with guns and dead big game animals all taken in the 1930s. I found it extremely sad, but she thought it quite normal to go out and kill animals – of course she was of a different time when hunting was far more socially acceptable.

She had obviously mixed in high circles as there were photos of the Aga Khan and military uniformed officers with lots of horses and pack mules. It would appear that when they went on safari, every home comfort was also taken. She told me of society occasions held in the ballroom which was now covered in wet mouldy carpets. I could not have purchased any of the big game as every single one of them had been infested by who knows what – maggots and insects with half the fur missing. She did tell me that she had had to let the family silver and bronzes go previously.

The whole experience was one I would not have missed but completely unproductive – there was not a single item that wasn't too damaged to purchase. I am certain that in its heyday, the house was full of treasures which would be worth a fortune today, had they survived the disrepair of the building.

The lady was quite elderly and completely of another era. She told me of her exciting life and how difficult it was getting the 'right' servants these days. I often wonder if she is still in that great big house living out her life with memories of a privileged lifestyle which will probably never return.



Back to reality and the present, the shop is doing well but I am finding it more and more difficult finding new stock, so if you are having a good clear out and you find anything interesting, please give me a call. I don't mind calling on you even for single items and there is absolutely no obligation for you to sell anything.

Thank you,

David.

Please see advert below for contact details and opening times.



ANTIQUES AND COLLECTABLES

6 Church Lane, Crossgates, LS15 8BD. Just off Austhorpe Road. 2 Minutes from Arndale / Crossgates Centre

We are looking for stock

Anything WANTED that's old and interesting including

**Medals, Toys, Clocks, Watches, China, Tools,
Furniture, Taxidermy, Coins, Silver & Gold,
Old Postcards, Jewellery, Scrap Gold and Silver**

Fair honest prices paid

**Please phone 07956 06 76 13
or 0113 264 94 66 for details**

Open Mon - Sat 09:30 - 16:30 (CLOSED SUN) - FREE CUSTOMER PARKING



Diary Of A Pawnbroker

Make This Summer Special!

Summer holidays are here, the weather is hot and Wimbledon is in full swing. Foreign holidays are back on the cards, and our Foreign Exchange departments are rushed off their feet selling Euro's, Dollars and Lira.

However customers are also buying and selling gold almost as much as currency. Those wishing to raise a few pounds are cashing in on the back of the strong gold price and getting a lot more than they bargained for when selling their old unwanted jewellery, chains and rings.

Cash In Your Gold.....



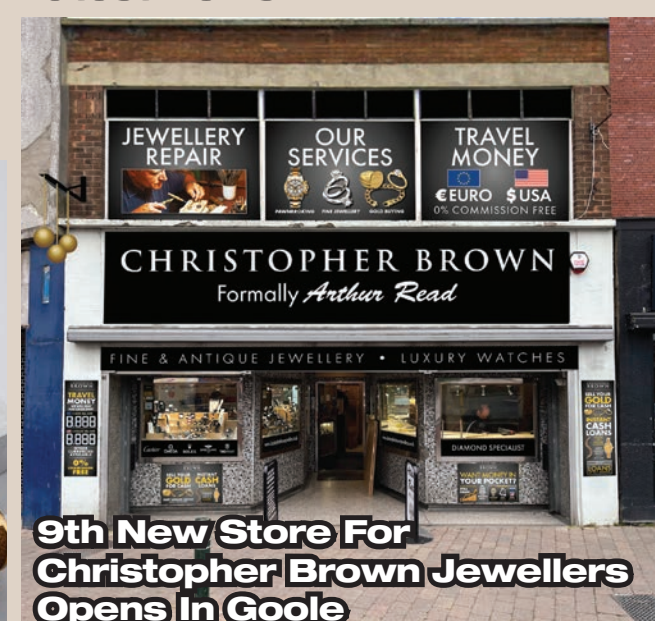
The price of scrap gold remains at near record highs and we are paying top prices for resalable jewellery and even scrap or broken gold. You would be surprised how much even the smallest amount could be worth. The yellow metal has had a huge resurgence in popularity and the younger generations are now 'layering up' their gold chains and rings. Fashions change over time however there is now a much greater demand for those wanting to wear yellow gold as opposed to white gold and we have even introduced a new gold-plated silver range to help those looking for a bit of summer bling that won't break the bank. For those looking for good value then second hand is the way to go and you will save upto 50% on your jewellery purchase when you choose pre-owned.

Need Cash Now?..... We Can Help!

There are many of us who need a bit of extra cash right now and our pawnbroking lending service could be just the thing you need to get through your short term cash requirements while your finances settle down. A pawnbroking loan is a secured loan against your jewellery, luxury watch or gold. We value your goods and use it as collateral, holding it in our vaults while you borrow the money against it. Interest accumulates for the length of time the item is held and a loan could be as little as one month or last for upto seven months. You decide the length of time you need and you can pay back the loan or even a portion of it at any time to reduce the interest owed.

The beauty of borrowing money in this way is that it only takes minutes to arrange, and although 80% of all loans are repaid, if for whatever reason you cannot redeem your goods then we will sell them on your behalf to pay off the amount owed and what's more, you get back any profit should the items sell for more than the amount owed. Call in to your nearest branch for details or visit www.christopherbrownjewellers.co.uk for more details.

Latest News:



Arthur Read Jeweller of Goole is now part of Brown & Gold Ltd and trading as Christopher Brown Jewellers. Established in 1948, the business has a great reputation at the heart of East Yorkshire. The branch has undergone an entire refit to make it lighter and brighter and created more space to allow the traditional services they have always been known for, such as high-quality diamond and antique jewellery, quality repair service and gold-buying to continue. We will also be reintroducing services old and new such as pawnbroking – a service they always offered in the past - and new products like travel money to provide our customers a convenient money service offering.



Looking For An Exciting Career In The Jewellery Industry?

Do you have 3 or more years of experience in the retail jewellery industry and have what it takes to become a Retail Jewellery Manager?

Christopher Brown Jewellers are recruiting Assistant Store Manager roles in our busy Leeds and York branches. We want people with flair and potential to become a part of our ambitious and expanding family business. With positions available in York and Leeds (Seacroft) you will be given the opportunity to develop your product knowledge and learn new skills that will take you to the next level. If you have a passion for jewellery then we want you to join our team.

Please email applications with CV to:

careers@brownandgold.co.uk or contact our Head Office for further details www.christopherbrownjewellers.co.uk

Chris Brown

CHRISTOPHER BROWN

PRE-OWNED LUXURY WATCHES
DIAMOND SPECIALISTS
BESPOKE JEWELLERY MANUFACTURE
VALUATIONS
CONFIDENTIAL ASSET LENDING SERVICE
JEWELLERY AND WATCH REPAIRS



PLUS DISCREET PAWNBROKING LOANS AVAILABLE

PERSONAL & BUSINESS LOANS*

*Subject to terms and conditions.
Ask Instore for details.

SEACROFT:

Unit 4, Seacroft Shopping Centre
Leeds LS14 6JD
Tel: 0113 265 6029

YORK:

22-23 High Ousegate, York YO1 8RX
Tel: 01904 642 746

SHIPLEY:

8 Arndale Shopping Centre
Shipley BD18 3QQ
Tel: 01274 588 112

BATLEY:

87 Commercial Street
Batley WF17 5HZ
Tel: 01924 476 066

PONTEFRAC:

33 Market Place
Pontrac WF8 1AG
Tel: 01977 701 979

www.Christopherbrownjewellers.co.uk

WANT MONEY IN YOUR POCKET?

GOLD PRICES ARE
STILL HIGH!

SELL YOUR GOLD OR USE IT TO BORROW CASH!*



*TECS APPLY. APPLY IN STORE FOR DETAILS.

MUSIC

Punk Rock Factory

Billie Eilish

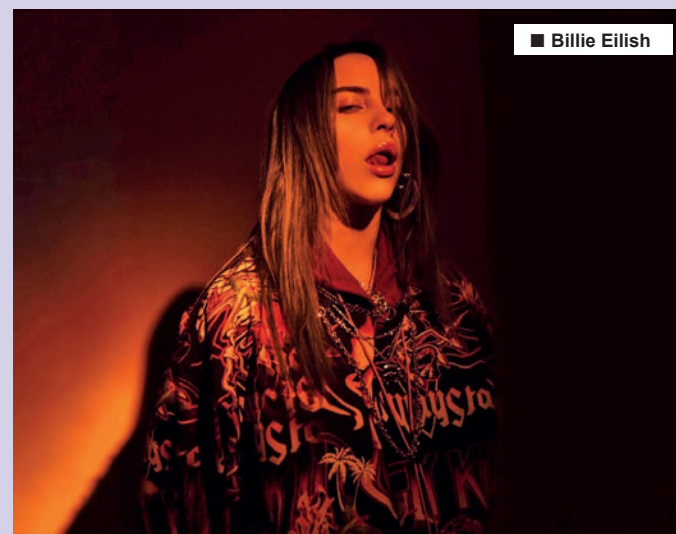
Gigs & Festivals!
By Stuart Glossop

If Glastonbury has proved anything it was that coming up with something new and original and a little different isn't as easy as it looks. Even the standout Glastonbury performance from Rina Sawayama, who we featured here a couple of years ago, owed much to the likes of Lady Gaga. But there are a few things that are worthy in terms of something new but still with a definite wink to the past.

There is, for example, PUNK ROCK FACTORY the kings of turning any song into a pop punk masterpiece. The boisterous four piece from South Wales take all your favourite tracks and make them sound like you never quite imagined they could! No-one is immune - these four lads have adapted everything from Disney classics and assorted rock & pop hits to TV themes from across the decades. Having played their first ever live show at the UK's Bloodstock Festival in 2021 they followed up with a sold-out UK tour and slots at Download and Slam Dunk in 2022. The band steam-rolled into 2023, selling out every show again on their second UK tour. On their third they play Leeds University on 28th October. Their new album, It's Just A Stage We're Going Through, is self-released and features their single 'Mamma Mia'. Their reimagined version of 'Mamma Mia' is just one of 10 high octane tunes from the new album. They also paid faithful homage to ABBA's original video for the track - recreating it frame by frame, right down to the white boots and hair styles.

Old and yet new is what BUSTED's new venture is. A series of 2.0 remakes of their biggest hits is proving to be one of the most fun concepts they've ever embarked upon. The trio - James Bourne Charlie Simpson and Matt Willis - have relished the opportunity to work with bands they've always admired (Simple Plan, Neck Deep and Hanson, with many more to come), while fans have seen their old favourites given a fresh lease of life. The series now continues as Busted give 'Crashed The Wedding' a new vibe with the help of featured artists All Time Low. This new take on 'Crashed The Wedding' is a classic case of: if it's not broke, fix it anyway. It's the song you've always loved, just with the guitars cranked up to 11, the drums hitting harder than ever before, and its sweet vocal harmonies have become far more layered and energised. See if it all works at Leeds Arena on 17th September, with a now grown-up Hanson supporting.

And not to miss out festivals Leeds and Reading Festivals have announced something that has not been tried before. They have announced they will host the world's biggest ever silent-disco. In a world's first simulcast main stage set across both Leeds and Reading sites. The Brit-nominated and multi-platinum drum & bass duo SIGMA have also been announced to headline the historic closing party with members performing on Main Stage West in Bramham Park and Richfield Avenue at on the Sunday night at the same time. Details of how fans can secure their headsets to be announced soon.



Sigma join the already stacked line-up over 100 of the world's most exciting acts including headliners including Billie Eilish, Sam Fender, The Killers, Foals and Imagine Dragons, as well as Becky Hill, Steve Lacy, Wet Leg, Bicep Live, MK, Loyle Carner, Nothing But Thieves and more spanning across the 3-day extravaganza.



Sigma (aka Cam Edwards and Joe Lenzie) are one of the only UK dance acts to make it big in the world of pop - achieving Gold certification status on their debut studio album Life and a host of platinum accolades, amassing over 2.7 billion worldwide streams combined - without losing relevance in the Drum and Bass scene where the London-based duo spent a decade, pre-fame. Sigma just released their new single with singer-songwriter Morgan, the infectious drum & bass banger 'Adrenaline Rush,' which features the iconic string riff from The Verve's late 90's hit single 'Bittersweet Symphony' and The Rolling Stones 'The Last Time'. The new track comes off their impending third studio album 'London Sound.'

Ocean Colour Scene Play Halifax - Victoria Hall



Indie-rock legends Ocean Colour Scene have announced a thirteen-date UK tour for 2023 coming to HALIFAX - Victoria Theatre on Thursday 25th August.

Ocean Colour Scene frontman Simon Fowler, guitarist Steve Cradock and drummer Oscar Harrison will perform their biggest hits and anthems, including The Riverboat Song, The Circle, Traveller's Tune, Hundred Mile High City and The Day We Caught The Train across the two-leg tour that begins on 18th August and ends on 18th December. The tour also includes a date at London's Eventim Apollo on 16th December.

Formed in Birmingham in 1989, OCS spent six years fine-tuning their sound before lighting up the Britpop party with three Top 5 albums; 1996's 'Moseley Shoals', 1997's 'Marchin' Already' and 1999's 'One From The Modern'. The band has also achieved seventeen Top 40 singles, including a staggering run of nine successive Top 20 singles and a mantelpiece full of awards.

As with all the best groups, behind the swagger and style were great songs, with words and melodies that found their way into the public's hearts.

Honing their craft in the spirit of the soul, folk and blues greats who inspired them, Ocean Colour Scene's celebrated live shows have cemented the relationship between the band and their fiercely loyal fanbase, with each concert serving as a communal outpouring of hope and joy, boasting the most life-affirming singalongs you're likely to hear anywhere.

Speaking about the upcoming shows, Simon Fowler said, "After starting with a short run of dates in the summer, it's going to be great ending the year on the road with Ocean Colour Scene, playing all the hits and more for some proper pre-Christmas partying with our fans who are the best in the land."

Guitarist Steve Cradock said, "This feels like the first proper tour Ocean Colour Scene have done in years. Last year we managed six dates because of the World Cup, and the year before Covid was still scaring people, so we are going to make it something special. Roll up, roll up for the magical OCS Tour!"

Drummer Oscar Harrison said, "Looking forward to seeing everyone on tour - and we're very happy that the final night will take place in Glasgow, a city with whom Ocean Colour Scene has always had a very special relationship."

Tickets for the OCEAN COLOUR SCENE - August 2023 - Halifax show are available from:

HALIFAX - Victoria Theatre

www.victoriatheatre.co.uk/whats-on/ocean-colour-scene

Doors - 7.30pm

Tickets - £37.50 / £40.00 + Booking Fee

WIN TICKETS

THE YORKSHIRE REPORTER HAS
A PAIR OF TICKETS
TO THE SHOW TO GIVEAWAY

To enter simply send 'OCEAN COLOUR SCENE' along with your contact details including tel number to

competitions@yorkshirereporter.co.uk

Terms & Conditions - Entries must be in by the 23rd July 2023. The winner will be contacted by phone or email and may be required for a photoshoot of them receiving their prize. Yorkshire Reporter's decision is final and no cash alternative will be offered.

Music At Scarborough Spa This Month

Scarborough Spa Orchestra

Sunday 23rd July – Wednesday 13th September 2023 – Scarborough Spa

The Legendary Scarborough Spa Orchestra returns.

Celebrating their 111th year - continuing a seaside tradition which dates back to 1912. The Orchestra, will play seven concerts per week from Sunday to Wednesday, all within the magnificent Scarborough Spa. The season will kick off with their opening evening concert on Sunday 23rd July.

www.scarboroughspa.co.uk/events/search?q=spa+orchestra

The Magic of Motown

Friday 28th July 2023 – Spa Theatre, Scarborough Spa



Seen by over a million people, now in its 18th year touring the UK.

It's no surprise that this show is one of the biggest success stories in British theatre history.

Celebrate the brand-new show for 2023 as they Reach Out and show you there ain't no mountain high enough with the biggest Motown party of the year.

Get ready for all the hits, glittering costumes, dazzling dance routines and outstanding musicianship in this breath-taking live concert spectacular.

You will be going Loco down in Acapulco as you are taken back down memory lane with all the Motown classics from artists such as, Marvin Gaye, Diana Ross, Stevie Wonder, The Temptations, The Supremes, The Four Tops, Martha Reeves, The Jackson 5, Smokey Robinson, and many, many more.

www.scarboroughspa.co.uk/the-magic-of-motown

Lost in Music

Saturday 29th July 2023 – Grand Hall, Scarborough Spa



The night out of the year that you need more than ever, is back!

Get ready to get LOST IN MUSIC!

The show that everyone is talking about, now even BIGGER!

Join them as they recreate the magical 70s and take you on a musical journey straight to the heart of disco!

Relive some of the greatest songs of all time from artists such as Donna Summer, Gloria Gaynor, Earth, Wind & Fire, Sister Sledge and Chic.

This show boasts a sensational live band, incredibly talented cast and stunning vocals and is sure to have you dancing in the aisles!

So, go dressed to impress as they celebrate the golden age of disco!

www.scarboroughspa.co.uk/lost-in-music



Ocean Colour Scene

Friday 21st July 2023 – Grand Hall, Scarborough Spa

Scarborough Spa in association with Neil O'Brien Entertainment Presents... Ocean Colour Scene

Ocean Colour Scene's rip-roaring live shows have long been one of the most extraordinary sights in modern rock - communal outpourings of hope and joy which boast the most life affirming sing-a-longs you'll ever hear.

OCS remain one of the most successful -and most loved- bands of the modern era. Having spent six years fine-tuning their sound, they lit up the Britpop party, chalking up three Top 5 albums- 1996's Moseley Shoals, 1997's Marchin' Already and 1999's One From The Modern and a run of nine successive Top 20 single's including the immortal 'The Riverboat Song' (in total they have seventeen Top 40 singles and six Top Ten singles).

In the years since they've honed their craft in the spirit of the soul, folk and blues greats who inspired them- returning the favour in 2018 when they took Martha Reeves and The Vandellas out on tour. "We couldn't quite believe that Martha Reeves was supporting us, it seemed absurd," says Simon. "But our crowd loved it, she went down really well."

www.scarboroughspa.co.uk/ocean-colour-scene



Mixing guitar-driven hooks with dancey, electronic polish, Northern Ireland's Two Door Cinema Club first gained attention with 2010's Tourist History and singles like What You Know, Something Good Can Work and Undercover Martyn. Tourist History received worldwide critical acclaim and it saw the band cement a global following.

The band have since produced a hat trick of records of equal merit and success: Beacon (2012), Gameshow (2016) and False Alarm (2019); each scoring Top 10 positions in the official charts of the UK and a rave reception from critics and fans alike.

September 2022 saw Two Door Cinema Club release their critically acclaimed fifth studio album 'Keep on Smiling'. Adopting a freer, more collaborative approach to the creative process it was written and produced by the band both during and coming out of lockdown, with additional production from Jacknife Lee and Dan Grech Marguerat. The record reignited the exuberance and sense of youthful abandon that originally propelled the group into the mainstream consciousness, cementing a legacy as one of the UK's most enduring and beloved bands.

www.scarboroughspa.co.uk/two-door-cinema-club

GAMES TEMPLE

BUY | SELL | TRADE



We Buy, Sell & Trade Consoles & Games

- New & Pre-Owned Games
- Consoles
- DVD's & Blu-Rays
- Collectibles
- Controllers & Headsets
- Gaming Accessories
- Action Figures
- iPhone Screen Repairs

Best Cash Prices
Given On Games



Console Repairs

We offer a comprehensive repair service for consoles using top of the range machinery and quality replacement parts. Our fully qualified technicians have years of experience and a proven track record. Each repair includes a 12 month warranty.

381 Harehills Lane, Leeds LS9 6AP

SHOP OPEN: MON - FRI 10am - 5pm & SAT 10am - 4pm

Tel: 0113 240 35 95

Facebook: @gamestempleleeds Instagram: Games_Temple_Leeds

GAMES TEMPLE

BUY | SELL | TRADE

BOOKS

The World's Worst Monsters A New Fiercely Funny Fantastical Illustrated Book Of Stories For Kids

Dare you enter the world of MONSTERS?

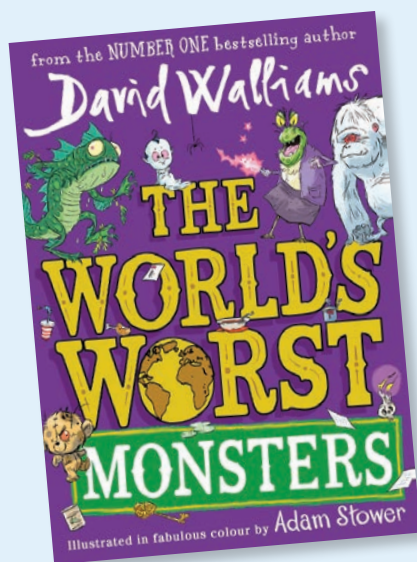
The beloved World's Worst series has captivated millions of readers. You've met the world's worst children, the world's worst parents, the world's worst teachers and the world's worst pets – but are you ready for the world's worst monsters?

If you don't like ghosts, ogres, zombies, vampires, aliens, werewolves or mummies, DO NOT READ THIS BOOK.

Laugh along to these ten terrifying tales of marvellous monsters, brought to you by David Walliams, and illustrated in glorious technicolour by Adam Stower

About the author

David Walliams is a literary phenomenon whose books have sold more than 50 million copies worldwide and have been translated into fifty-five languages.



The World's Worst Monsters

Author: David Walliams

Publisher: Harper Collins Children's Books

Available from Amazon

Priced £7.49

**WIN A COPY
OF THE BOOKS**

FEATURED ON THIS PAGE

To enter simply send 'BOOKS' along with your contact details including tel number, stating which book you would like to be entered for to competitions@yorkshirereporter.co.uk

Terms & Conditions – Entries must be in by the 23rd July 2023. The winner will be contacted by phone or email and may be required for a photoshoot of them receiving their prize. Yorkshire Reporter's decision is final and no cash alternative will be offered.

Footprints In The Woods: The Secret Life Of Forest And Riverbank

Footprints in the Woods is John Lister-Kaye's account of a year spent observing the comings and goings of otters, badgers, weasels and pine martens. This family - Mustelidae - all live in the wild at Aigas, the conservation and field study centre that has been John's home for more than forty-five years.

With the patient and meticulous care of a true naturalist, John observes and records the lives, habits and habitats of these elusive animals. Hours of careful waiting and watching in the woods and loch, the river, fields and moorland is rewarded with insight into how these animals live when unhindered by human interference; sometimes red in tooth and claw, but often playful, familial, curious and surprising.

As a boy, badgers and weasels were John's first encounter with wild animals. Now he has spent fifty years living side-by-side with them in the Highlands and come to know much of their ways. *Footprints in the Woods* is the culmination of that long association with the Mustelidae family, a love letter to the otters, badgers, weasels and pine martens that also call Aigas home, and a reminder of the fragility of habitat and the beauty and variety we have to lose if we don't choose to actively protect it

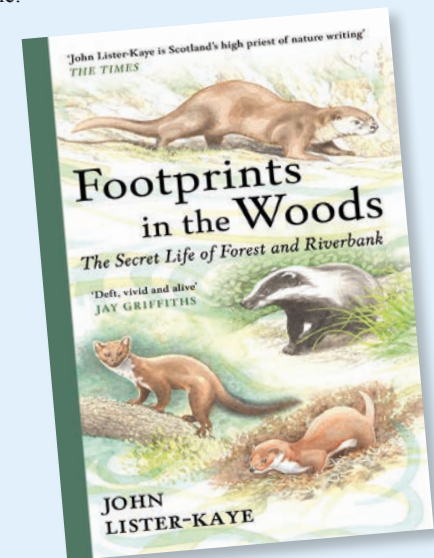
About the author

Sir John is one of Scotland's best-known naturalists and a lecturer of international repute. He was a Times and Guardian columnist and is the author of eleven books on nature and wildlife. His best-selling 'Song of the Rolling Earth' was published in 2003, and its sequel, *Nature's Child* in 2004. At the Water's Edge followed in 2010, and his book, *Gods of the Morning* (2015) won the inaugural Richard Jefferies Prize for nature writing and his latest, *The Dun Cow Rib, A Very Natural Childhood*, was published in August 2017.

In a 40-year career he was the first Chairman of Scottish Natural Heritage for the Highlands & Islands, President of the Scottish Wildlife Trust and Chairman of the UK government's Environmental Training Organisation and is a Vice President of RSPB. In 1986 he received the World Wilderness Foundation's gold award for environmental education; he has received honorary doctorates from St Andrew's and Stirling Universities and in 2003 he was awarded an OBE for services to nature conservation. In 2016 he was awarded the Royal Scottish Geographical Society's Geddes Medal for conservation, and made an honorary FRSGS.

He has lectured on wildlife and conservation on three continents; has led exciting expeditions to wilderness such as the Kalahari and Namib Deserts, the Atlas mountains, the Amazon basin, the Galapagos and to follow the polar bear migration across the pack ice of the Barent's Sea. In the winter of 2008-9 he undertook a four-month, 8,000 mile Land Rover expedition up Africa's Great Rift Valley.

He lives at Aigas, near Beaulieu, where he is director of the internationally acclaimed Aigas Field Centre, which he founded in 1970, and is currently running a Scottish Wildcat captive breeding programme.



Footprints in the Woods: The Secret Life of Forest and Riverbank

Author: Sir John Lister-Kaye

Publisher: Canongate Books

Available from Amazon

Priced £14.39

Before It Ends With Us, It Started With Atlas



Multi-million copy bestselling author Colleen Hoover tells fan favourite Atlas's side of the story and shares what comes next in this long-anticipated sequel to the #1 Sunday Times bestseller *It Ends with Us*

Lily and her ex-husband, Ryle, have just settled into a civil co-parenting rhythm when she suddenly bumps into her first love, Atlas, again. After nearly two years separated, she is elated that for once, time is on their side, and she immediately says yes when Atlas asks her on a date.

But her excitement is quickly hampered by the knowledge that, though they are no longer married, Ryle is still very much a part of her life—and Atlas Corrigan is the one man he will hate being in his ex-wife and daughter's life.

Switching between the perspectives of Lily and Atlas, *It Starts with Us* picks up right where the epilogue for the bestselling phenomenon *It Ends with Us* left off.

Revealing more about Atlas's past and following Lily as she embraces a second chance at true love while navigating a jealous ex-husband, it proves that "no one delivers an emotional read like Colleen Hoover"

About the author

Colleen Hoover is the #1 New York Times bestselling author of more than twenty-three novels, including *It Ends with Us*, *All Your Perfects*, *Ugly Love*, and *Verity*. In 2015, Colleen and her family founded a non-profit called The Bookworm Box, a bookstore and monthly book-subscription service that has donated over \$1,000,000 to various charities to date. Colleen lives in Texas with her husband and their three boys.

For more information, please visit ColleenHoover.com.

It Starts with Us

Author: Colleen Hoover

Publisher: Simon & Schuster UK

Available from Amazon

Priced £4.99



Academy Open Evenings

Will your child be joining Year 7 in September 2024?

Come and see why our academies are first choice education providers for so many young people in your area.



Leeds City Academy

With 'Outstanding'
for Leadership and
Management



Thursday 28th September 2023
6pm - 8pm

www.leedscityacademy.org.uk



Leeds East Academy



Thursday 28th September 2023
6pm - 8pm

www.leedseastacademy.org.uk



Leeds West Academy



Thursday 5th October 2023
6pm - 8pm

www.leedswestacademy.org.uk



ALDER TREE PRIMARY
BELIEVE - BELONG - BECOME



Leeds City Academy



Leeds East Academy

Leeds West Academy





Everyday is a great day
with Blue Sky!

July & August Day Trips & Holidays

July

Sun 16th - Blackpool or Fleetwood
Prices from £20.00

Sun 16th - Yorkshire Dales & The Emmerdale Tour
£49.50 (including entry)

Fri 21st - Bury Market
Prices from £18.00

Fri 28th - Flamingo Land
Prices from £50.00 (including entry)

Sat 29th - 'Liverpool' Stadium Tour
Prices from £38.00 (including entry)

Sat 29th - Concorde Visitor Park & Salford Quays
Prices from £35.00 (including entry)

August

Tues 1st - 'Happy Valley' Guided Tour
Prices from £30.00

Sat 5th - 'Man City' Stadium Tour
Prices from £38.00 (including entry)

Tues 8th - The Deep
Prices from £35.00 (including entry)

Thurs 10th - Edinburgh Tattoo Holiday - 3 days
£369.00

Fri 11th - Morecambe
Prices from £20.00

Mon 14th - Whitby
£20.00

Tues 15th - Redcar and Saltburn
£20.00

Fri 18th - St Annes Holiday - 4 days
£239.00

Sun 20th - 'Peaky Blinders' Guided Tour
Prices from £28.00

Mon 21st - Torquay Holiday - 5 days
£349.00

**Day Trip & Holiday Brochures Out Now!!
Call For Your Copy 0113 277 14 74**

Also Available To Book At www.blueskycoaches.co.uk



Pack Up A Picnic



For An Enjoyable Day Out

— BY LINZI DAVIES —

Us Brits love nothing more than a bit of sun and so far this year it has been very good. As soon as the warmer weather arrives we are in the garden releasing the patio furniture from its winter hibernation so we can enjoy our morning cuppa listening to the birds tweeting away, or share a family meal as the sun sets with a glass of something chilled. Essentially, there is something special about dining outside, and that is why July is National Picnic Month.

Picnics have come a long way from a soggy egg sandwich! In this month's feature we find out about the history of picnics, look at some of Yorkshire's favourite picnic spots, and have some suggestions of what to pack in your hamper.

Picnics Of The Past

Historically, picnics were an activity of the wealthy only. They first became popular in medieval times when hunting grew as a sport among the nobility. Rather than travelling all the way back to their castle or country home, food would be brought to the men in the forest or wherever they may be tracking their prey that day. Venison was high on the menu as was other vast amounts of meat. This was to differentiate themselves from the peasants, whose diet mostly consisted of bread and ale. The medieval lords also had a sweet tooth and they enjoyed custard rolls, enriched dough called manchet bread, and other desserts sweetened with honey. This would all be served at the same time as the main dishes as there was no such thing as eating courses back then.

Only the wealthy had the time and resources to enjoy an expensive and elaborate meal outdoors which would be served by the household staff while they relaxed on the lawns or enjoyed a game of croquet. Peasants and the working class often ate outdoors anyway as they worked in the fields, so this was more a case of grabbing a quick bite for sustenance rather than a leisurely lunch.

The French had a different way to enjoy a picnic, and as many aristocrats fled to England during the French Revolution, they brought their customs with them. In 1801, a group founded the 'Pic-Nic Society' in London. Rather than being an outdoor event, these picnics were held indoors in hired rooms, and every member was required to bring a dish and six bottles of wine! It was reported in The Times that these were rambunctious affairs where each member tried to outdo the others in both luxury and entertainment. There was singing, dancing, gambling but above all an amateur play. Despite the lack of an orchestra pit and professional actors, these events became so popular that the owner of the Drury Lane theatre became worried over how much business he was losing to the Pic Nics. It was around this time that the more genteel outdoor picnics of the English started appearing in literature, including Jane Austin's Emma from 1816 in which a vivid portrait of a rustic picnic box on Box Hill is portrayed.

As the Victorian period arrived and the middle class appeared, picnics became more common place as holding garden parties was popular among the bored and wealthy. They were very much carnivorous affairs as Mrs Beeton's famous Book of Household Management published in 1861 outlines her 'bill of fare for a picnic for 40 persons' which included a joint of cold roast beef, a joint of cold boiled beef, 2 ribs of lamb, 2 shoulders of lamb and much more meat including duck. Also on the menu were fresh pies such as veal or pigeon. In addition to all this there would be sandwiches – also filled with meat, although cheese was popular too often grated and mixed with cream or chopped nuts. According to Mrs Beeton, no Victorian picnic was complete without sweet treats too, with baskets filled to the brim with fruit turnovers, cheesecakes, steamed puddings, and blancmanges! All this was washed down with bottles of ale, ginger-beer, and lemonade, and of course plenty of tea.

Outdoor picnics also became popular in the USA, but in many countries the indoor version prevailed right up to the early 20th century. The development of new modes of transport over the previous couple of decades had made the countryside within reach to more of the general population, and specialist picnic baskets began to be produced for mass market.

The picnic has never really declined in popularity, proving to be an enjoyable activity that has stood the test of time. Enid Blyton even said, "I don't know why, but the meals we have on picnics taste so much better than the ones we have indoors." Picnic food went through a bit of a bleak period where it seemed to consist of soggy sandwiches and a packet of crisps, but they are once again becoming more of a luxurious affair, although still a cheaper option than eating at a restaurant or café.

Where To Picnic In Yorkshire?

The local park always has, and probably always will be a great spot for a picnic. A popular choice for families with young children, a picnic in the park provides a sense of occasion and excitement, whilst providing an affordable way to entertain the kids on a nice day.

Popular parks to picnic in Leeds include Roundhay Park, Middleton Park and Temple Newsam. The sheer size of Roundhay Park means that you can always find the perfect spot be it a quiet shady position under a tree, or near

the bustling playgrounds for the kids. Temple Newsam always has plenty of events on through the year so many enjoy a picnic whilst listening to live music.

In York, Dean's Park offers great views of York Minster, and is ideal for avoiding the midday sun, with the imposing building offering plenty of shade. Museum Gardens provides loads of benches and grassy areas, and Rowntree Park has a skate park and play areas for the kids.

Harrogate also has plenty of parks to enjoy a picnic in with Valley Gardens, The Stray and Killinghall Moor Country Park all offering something for all the family including relaxing spots, play areas and wildlife.

If you fancy somewhere a little different to the park, here are some other popular places to spread out your blanket and enjoy a feast in the sun:

Bolton Abbey - Skipton

Bolton Abbey has long since been a place for us Yorkshire folk to head to on a warm day. There are scenic walks a plenty, the ancient abbey ruins for the history buffs, and the River Wharfe providing a tranquil backdrop for your picnic. The river runs shallow at the abbey, so is ideal for the kids to splash around in and cool off – with adult supervision of course! There are also the famous steppingstones to jump across.

Yorkshire Sculpture Park - Wakefield

The Yorkshire Sculpture Park near Wakefield is a world of wonder for children and adults alike. The 500 acres of countryside is dotted with over 100 world class sculptures and installations to discover from the traditional to the weird and wonderful, by a diverse group of artists ranging from local creatives to famous names such as Damien Hurst. Let your imagination run wild and choose a picnic spot near your favourite piece!

Castle Howard - York

Castle Howard has gardens, lakes, and fountains to explore, well worth the entrance fee. It feels peaceful which is just what you need for a picnic and there are plenty of picturesque spots to choose from. The Skelf Adventure Playground will keep the kids occupied and there are always events running so you could time your visit to coincide with those too.

Brimham Rocks - Harrogate

Brimham Rocks is a fabulous place to explore. Take a walkthrough the dramatic heather moorland and clamber over the giant rock formations which were created by an immense river dating back to before the dinosaurs! Brimham Rocks is also a bird watcher's paradise, so see which species you can spot whilst eating your picnic in this ancient setting.

Sheepwash - Osmotherley

If you fancy a really rustic spot to enjoy your picnic, then Sheepwash must be one of your top choices. Located on the Cod Beck, which flows into Cod Beck Reservoir, Sheepwash is a popular picnic spot with many. Once a watering place on the ancient drovers' road over the moors to Yarm and the River Tees, it is a perfect position to enjoy some lunch in a scenic, tranquil yet wild place. You can dangle your feet in the stream or watch the fish swim by in the clear, shallow water.

Knaresborough

Knaresborough offers several options for a picnic spot. After a wander around the little town and a relaxing ride on the rowing boats, set your hamper down on the riverbank and let the kids have a paddle. Mother Shipton's Cave is a beautiful spot with shaded woodland areas, and the castle ruins set up on top of the cliff give a fantastic view over the town and riverside.

Kirkstall Abbey

The ruins of this once busy Cistercian Monastery are still majestic, being one of the best preserved in the country and you can get a glimpse of how the monks led their life in Medieval Leeds over 800 years ago. Set alongside the River Aire amidst manicured lawns and the little museum and gift shop, you can find a quiet spot in full sun or shelter under a tree or even amongst the ruins themselves for a spot of shade. Kirkstall Abbey is free to visit for Leeds residents (with proof of address) and for those from farther afield, the entry ticket is valid for a full year so you can return throughout the seasons.

The Great Yorkshire Coast

There are far too many beauty spots along our coast to name them all, and most of us have a favourite tried and tested destination when heading for the seaside. Scarborough, Bridlington and Filey all offer the gorgeous sandy beaches along with amusements that the kids all love, there is Robin Hood's Bay great for rock-pooling and Flamborough Head which is fantastic for spotting our coastal wildlife. If fish and chips are not your thing, then it has long since been tradition to pack a picnic to eat on the beach or the clifftops. In recent years though, the seagulls have become far more aggressive and adept at stealing food right out of your hand, so dining alfresco at the coast is no longer for the faint-hearted. If you do choose to take a picnic, we recommend finding a quiet spot away from the beach and slightly further inland where the pesky birds are less likely to be hovering. And nobody wants a sandy sandwich anyway!

What To Pack In Your Picnic

The most important thing to remember when making a picnic is to create a delicious yet easy spread. Food that stands up to the journey, simple to eat but packs a powerful punch of flavour! Also, don't forget plastic cups and cutlery – try to choose re-usable ones that can be taken home and washed so that your picnic has less impact on the environment than disposables. Ice packs are an ideal way to keep your food cool and fresh, especially on a hot day, and you will need a pretty blanket to sit on too. Here are some suggestions on what delights to pack in your hamper or cool bag today – unless of course you want to go all Victorian with several joints of meat!

Why not start with some appetisers which require no utensils such as a charcuterie board. Mediterranean selections of salamis and other cured sausages with a few varieties of cheese and some roasted peppers and olives make a great choice for finger food. Paired with some hunks of crusty bread torn from the baguette, these are the perfect nibbles to get you started. Crudites of peppers, carrots, and cucumber along with a dip such as hummus work well too.

For main courses, pies and quiches work well, as do mini pizzas. These are all firmer than sandwiches so less likely to get squashed or soggy on the journey. If you do prefer a sandwich, choose firmer bread. A rustic sourdough for example will hold up better – and filling it with drier ingredients such as sliced meat or cheese will work better than egg mayo or tuna. You can always take some chutneys, sauces, or other fillings in small Tupperware pots to add once you are ready to eat. To accompany your main courses, a salad can be prepared at home and easily transported in an airtight container.

For dessert – how about a traditional English cream tea? Fruit scones, and little pots of cream and jam are easy to pack, and they can be served with fresh strawberries. Other great options are things like brownies and flapjacks – less likely to crumble enroute than a cake or bun.

Don't forget your drinks too! A thermos of tea would go down well with a cream scone, and bottles of water, sparkling or still can be garnished with slices of citrus fruit. Of course, you could also mix up a cocktail or mocktail at home and serve in pretty plastic glasses once you are there. For a really special, romantic occasion, a bottle of prosecco or champagne will do very nicely!

Whatever you choose to eat, or wherever you go, make the most of the great British summer while it lasts, and enjoy a delicious meal alfresco!

Most Popular Picnic Foods

Despite all these mouthwatering ideas, a recent poll showed that the most popular foods to take on a picnic remain the more traditional ones.

Here is the UK's top 10 picnic foods;

1. Sandwiches
2. Crisps
3. Sausage rolls
4. Cherry tomatoes
5. Pork pies
6. Scotch eggs
7. Scones
8. Slices of cheese e.g. cheddar, halloumi
9. Cocktail sausages
10. Fruit such as watermelon or strawberries





Breeze in the Park returns again this year offering a fun time with an interactive play system, arts zone, food and classic inflatables.

All Breeze in the Park events for 2023 are funded by local Community Committee Teams

Session times: 12noon – 2.30pm and 3pm – 5.30pm

- **Wed, 26 July** Queens Park, Pudsey, LS28 7FB
- **Thurs, 27 July** Wetherby Ings, Wetherby, LS22 5FN
- **Fri, 28 July** Glebelands Recreation Ground, Garforth, LS25 1NT
- **Sat, 29 July** Parkside Fields, Belle Isle, LS10 3HF
- **Mon, 31 July** Potternewton Playing Fields, Scott Hall Rd, LS7 2EE
- **Tues, 1 August** Cross Flatts Park, Beeston, LS11 7BQ
- **Thurs, 3 August** Tinshill Recreation Ground, LS16 6BN

- **Fri, 4 August** Garnett Field, Otley, LS21 1AS
- **Sat, 5 August** Blackgates Primary Academy, Tingley, WF3 1QQ
- **Mon, 7 August** Haslewood Park, Oxtown Way, Burmantofts, LS9 7UZ
- **Tues, 8 August** Hainsworth Park, Farsley, LS28 5ES
- **Wed, 9 August** Kirkstall Abbey, Kirkstall, LS5 3EH
- **Thurs, 10 August** Springhead Park, Rothwell, LS26 0DY
- **Fri, 11 August** Manston Park, Cross Gates, LS15 8HA
- **Sat, 12 August** Harehills Park, Harehills, LS9 6ND
- **Mon, 14 August** Farnley Hall Park, LS12 5HA
- **Tues, 15 August** Adwalton Moor, Drighlington, BD11 1JZ
- **Wed, 16 August** Primrose Valley, Halton Dean, LS15 7JA
- **Thurs, 17 August** West Park Leeds RUFC, Bramhope, LS16 9JR

- **Fri, 18 August** Woodhouse Moor, Woodhouse Lane, LS6 1SJ
- **Sat, 19 August** Armley Park, Stanningley Road, LS12 3LW
- **Mon, 21 August** Nunroyd Park, Yeadon, LS19 7HR
- **Tues, 22 August** East End Park, East Park Parade, LS9 9NG
- **Wed, 23 August** Kippax Common Playing Fields, Off Rosewood Ave, LS25 7DL
- **Thurs, 24 August** Bramley Park, LS13 3PG
- **Fri, 25 August** Scatcherd Park, Morley, LS27 9JP
- **Tues, 29 August** Middleton Park, LS10 3SH
- **Wed, 30 August** Seacroft Village Green, LS14 6JS
- **Thurs, 31 August** Horsforth Field Playground, Drury Avenue, LS18 4BR

Important Information Before Arriving

- Only 2 adults are allowed with every booking
- Please do not arrive any earlier than 15 minutes before your allocated booking time.
- Your timed session gives you 2 hour and 30 minutes.
- Please leave promptly at the end of your session.
- Catering on site but please bring your own picnic blanket.
- No glass bottles or sharp objects allowed on site.
- No dogs allowed, except assistance dogs.
- Please arrive via foot, there is no designated parking provided.

While visiting Breeze In The Park please

- Be aware of peoples personal space
- Wearing a face mask is your personal choice
- Take your rubbish home with you
- Respect each other and event staff
- Enjoy your day

Ticket Information

Tickets available via www.breezeleeds.org

Admission is 50p per child.

Your Breeze Pass is not required for entry

Leeds, We're Going On A Bear Hunt



Leeds Hospitals Charity has let 85 grizzly sculptures loose for Leeds Bear Hunt 2023, a large-scale public art trail of bears roaming free across Leeds city centre – to raise money for Leeds Children's Hospital.

Paying tribute to Michael Rosen's popular 'We're Going on a Bear Hunt', 35 giant bears and 50 adorable bear cubs designed by local artists and sponsored by local businesses are hidden around central Leeds and nearby public parks, ready to be discovered.

Leeds Hospitals Charity hopes to raise over £300,000 from the wild art trail for crucial projects at Leeds Children's Hospital that help improve the lives of the inspiring young patients at the hospital receiving treatment and care. In the last year alone, Leeds Hospitals Charity has funded a vast array of projects at the hospital from ground-breaking research projects and innovative diagnostic technologies to specialist play staff and Christmas gifts.

Leeds Bear Hunt is expected to attract hundreds of thousands of visitors over the summer months and brings together the business and creative

sectors with local schools and communities to celebrate Leeds' diverse cultural offer and communities.

To embark on your own fun-filled discovery adventure, download the 'Leeds Bear Hunt' app at www.leedsbearhunt.co.uk/app.

Paul Watkins, Director of Fundraising at Leeds Hospitals Charity, said: "Leeds is going on a bear hunt, and we can bear-ly contain our excitement! We've been blown away by the incredible talent of the artists, schools and communities and are so grateful to all our sponsors and partners who have helped bring the trail to life. We're very lucky to have a dedicated hospital in Leeds that offers a comprehensive range of specialist paediatric services rivalling any children's hospital in the country. The funds raised through Leeds Bear Hunt will help Leeds Children's Hospital continue to provide exceptional treatment and care to poorly babies and children."

Thanks to Longs of Leeds, the official transportation partner of Leeds Bear Hunt, the bears arrived safely at their new homes across Leeds City Centre.



Each bear has been uniquely designed by a local or national artist, or members of the local community, and developed in partnership with Wild in Art and Walker Productions/Lupus Films.

At the end of the trail, Leeds Hospitals Charity will auction off each of the 35 large bear sculptures to continue its mission to raise as much funding as possible for Leeds Children's Hospital. Those who are lucky enough to win will not only help to fund a vital, local cause but will also own a very unique piece of art.

Volunteer opportunities are still available to support 2023 Leeds Bear Hunt visit: <https://volunteers.leedshospitalscharity.org.uk/opportunities>



This summer be inspired by all of the natural Bs around Kirkstall Abbey.

Spot the brilliant beasts hidden beneath, behind and between the ruins in the bees, birds, bats, and bugs trail.

There will also be a range of fun family activities to join in with – making clay bugs, close encounters with real birds of prey, and a whole day devoted to bees!

Kirkstall Abbey 25 July - 01 September

Opening hours:

Monday: closed*

Tuesday - Sunday: 10am - 4pm

Last admission: 3.30pm

*Open Bank Holiday Mondays

Kirkstall Abbey is free to visit for Leeds residents (with proof of address) and for those from farther afield, the entry ticket is valid for a full year so you can return throughout the seasons.

ROYAL ARMOURIES

NATIONAL MUSEUM OF ARMS AND ARMOUR



ACTION-PACKED SUMMER

26 JULY – 3 SEPTEMBER 2023

FREE HORSE SHOWS
COMBAT | DRAMA | HISTORY
HAVE-A-GO ACTIVITIES

**JOUSTING
TOURNAMENT**
26 – 28 AUGUST | BOOK ONLINE

LEEDS | FREE ADMISSION | DAILY 10:00 – 17:00

BOOK YOUR VISIT WWW.ROYALARMOURIES.ORG



National Highways has revealed a multi-million-pound investment into creating better journeys in Yorkshire and the North East for the year ahead.

A £160m package of renewals and improvements will be delivered on roads, paths and bridges across Yorkshire and the North East over the next 12 months.

The investment will create safer and smoother journeys for millions of road users on motorways and A roads across the region. Of the £160m, around £4m will be spent on facilities for cyclists, equestrians and pedestrians.

Plans for renewals include road resurfacing, motorway safety barrier upgrades, bridge joint replacements, improved signage and drainage and renewal of traffic lights. The package will cover more than 350 renewals and improvement schemes across the region, over a network totalling 670 miles.

Simon Boyle, National Highways Regional Director, said:

“It’s vital that National Highways’ motorways and A-roads are kept in good condition to make sure they remain safe, reliable and keep Yorkshire and the North East moving.

“Providing access to international gateways – from ports at Grimsby and Immingham and Tees and Hartlepool, to airports at Newcastle and Leeds-

Bradford, our road system supports business growth. It also brings tourism to our stunning natural, cultural and historic attractions.

“This investment will help us achieve the ambitious plans we have for our roads, the communities we serve and the environment. Together we’ll work to tackle congestion, create even safer roads, and introduce new technology to create better links across the Pennines, to Scotland and beyond.”

The wide-ranging, comprehensive programme of renewals and improvements for 23/24 includes:

- Central barrier upgrades on the M1 and A1M in West Yorkshire
- A new set of joints for the M62 Ouse Bridge in East Yorkshire. They will enable a permanent repair of this vital structure which forms part of a key route into Hull. This extensive programme of repairs is expected to finish in early 2024
- Essential upgrades to Myton Swing Bridge in Hull including the replacement of joints, markings and studs as well as resurfacing and waterproofing
- Resurfacing on the A1 from Wandylaw to Warrenford in Northumberland
- Renewals on the A1 between junctions 49 and 56, including renewed road markings and studs

- The design and construction of a scheme of improvements at the M1 Junction 39
- The design and construction of various renewals on the M180 including resurfacing of the slip roads at junctions 3,4 and 5, drainage and bridge parapet repairs

Proposals for the renewals and improvements also include projects supported by National Highways Designated Funds. National Highways manages four designated funds, allocated by the Government, to deliver benefits above and beyond building, maintaining and operating England’s strategic roads.

Plans to benefit the environment and wider community include:

- The construction of new facilities for pedestrians, cyclists and equestrians along the A616 at Underbank in South Yorkshire
- The design of improvements to a footbridge on the A1 near Burwell Avenue at East Denton, Newcastle Upon Tyne
- A grassland extension programme to improve biodiversity near the A19 in the North East
- Funding towards a biodiversity programme near Newton Aycliffe
- Preliminary designs for improvements to junction 70 of the A1 at Dunston
- Upgrades to street lighting on sections of the A61, A62 and at Junction 35a of the M1 and the A616.

In addition, National Highways will continue to invest in and deliver major road schemes in the region in 2023/24:

- £73m is due to be invested into the A1 Birtley to Coalhouse scheme to reduce congestion and create safer and more reliable journeys on this key route in the year ahead
- A further £58m has been earmarked for the A63 Castle Street scheme to create a new junction, leading to much better connections between the city centre, retail outlets and the docks area as well as improving the link from the M62.
- £18m is also planned for the M621 project to create safer, more reliable journeys between junctions 1-7 on this Leeds motorway

This latest investment into the region’s roads follows on from last year’s essential maintenance programme which saw National Highways inject £135 million into the completion of more than 300 renewals and improvements projects.

To keep up to date with when this year’s projects will be delivered, or to get the latest travel information follow @HighwaysYORKS and @HighwaysNEAST on Twitter; National Highways: Yorkshire and National Highways: North East on Facebook

You can also find out more at;

www.nationalhighways.co.uk/our-roads/yorkshire-and-north-east

FIRST PERMANENT AVERAGE-SPEED CAMERAS IN WEST YORKSHIRE TO BE INSTALLED IN LEEDS

Leeds City Council will soon install the first permanent average-speed cameras in West Yorkshire, which will be located on the A6120 Outer Ring Road and the A647 Stanningley Bypass, and form part of the Connecting West Leeds scheme.

The speed cameras are being installed as part of a wider strategy which has been created by the West Yorkshire Safety Camera Partnership, consisting of local authorities across West Yorkshire and West Yorkshire Police. The strategy works to recognise ‘high risk’ locations, either where speed-related casualties have happened or there is clear evidence of speeding.

Since the strategy’s launch in February 2023, the council have reviewed some of Leeds’ busiest roads, which has resulted in the A6120 Outer Ring Road and A647 Stanningley Bypass receiving support for the introduction of average speed camera enforcements.

The current speed limits were reviewed and a reduction from 70mph/60mph to a continuous 50mph will be introduced. The speed reduction to 50mph on the A6120 Outer Ring Road and A647 Stanningley Bypass, from Horsforth roundabout to Stanningley Bypass at Henconner Lane Bridge, formed part of the Connecting West Leeds Phase 2 consultation last year and received a 62 per cent positive response.

The existing fixed speed cameras located on A647 Stanningley Bypass, that are to be replaced by average speed cameras, will be relocated to A647 Stanningley Road at the following locations: the central reserve near to Armley Grange Drive junction and the central reserve near to Redcote Lane junction. They will be able to enforce both east and westbound directions of traffic and are in addition to the three mobile camera bays that are currently installed on A647 Stanningley Road near the junctions of Moorfield Road, Cockshott Lane and Houghley Lane.

The council will begin installing the cameras in autumn 2023.

BANGERS & CASH LIVE – TV SHOW BEHIND NEW FESTIVAL DEDICATED TO ALL THINGS BANGERS & CASH



A new live event will give fans the chance to get closer to the world of Bangers & Cash. The hit UKTV Original series follows the work of Mathewsons, a family-run classic car auction house. Bangers & Cash Live will take place on Saturday 12th August and Sunday 13th August at Scampston Hall in Malton, North Yorkshire – just a few miles from Mathewsons’ Thornton-le-Dale HQ. Tickets available from Eventbrite.

Visitors will have the opportunity to get up close and personal with Derek, Dave, Paul and the Bangers & Cash crew in a series of live Q&As. There will be a chance to admire some of the cars and bikes that have appeared in previous and future episodes of the series, as well as the pride and joys from classic car clubs from the local area and beyond, and to see some of the prized vehicles in the Mathewsons’ personal vehicle collections. Also, for the first time since the start of the pandemic in 2020, visitors to Bangers & Cash Live will be able to see a Mathewsons auction, with Derek himself putting several selected vehicles and memorabilia lots under the hammer.

The family-friendly festival will also have a host of entertainment including guest speakers, live music, a range of activities for children, and an abundance of food and drink on sale from some of the best local suppliers.

Tickets are just £15 (plus booking fee) for adults and £5 for Under 16s (plus booking fee) per day and are on sale now. Under 5s tickets are free.

Full event details are online at: <https://bangersandcashlive.co.uk>.

Derek Mathewson said, “I can’t wait for Bangers & Cash Live! I’m always hearing how much the show means to people so it’s nice to be able to do something like this in person. We used to do our auctions in the village hall, and then since Covid we’ve only done them on the internet, but now we’ll do one in front of a several thousand people – unbelievable really! I’m also pleased that we can do this just up the road from us at Scampston and I’m looking forward to seeing everyone and all the vehicles and so on there.”

Bangers & Cash and spin-off sister show, Bangers & Cash: Restoring Classics have both proved a hit with Yesterday and UKTV Play viewers. Bangers & Cash: Restoring Classics continues on Thursdays at 8pm. A new series of Bangers & Cash will follow later this year, and all episodes of both series continue to be available to stream for free on UKTV Play.

RAC OFFERS MORE DRIVERS THAN EVER THE CONVENIENCE OF GETTING THEIR CARS SERVICED OR REPAIRED AT HOME OR WORK

Drivers across the length and breadth of Great Britain can now avoid the time and hassle of having to take their cars to a garage to be serviced or repaired by booking a visit from one of the RAC's new mobile mechanics.

Renowned for its orange vans and patrols, the RAC is building on its trusted reputation for roadside assistance by moving into mobile servicing and repairs to enable people to get their cars serviced on their driveways or at work at a highly competitive price.

In a bid to do away with the inconvenience often associated with getting to and from the garage to drop off and collect cars for servicing and repairs, RAC Mobile Mechanics simplifies the experience for drivers by bringing the garage to their homes. What's more, RAC mobile servicing and repairs are now available to more drivers than ever with its expert mechanics now covering the 20 biggest towns and cities – with plans for even wider coverage before the end of the year.

In fact, RAC research shows that six-in-10 drivers (62%) say they would find it appealing to have a trained mechanic come to their house or work to service their car rather than having to take it to a garage. Of those who find it a hassle taking their vehicle to the garage, three-quarters (75%) say the biggest inconvenience is having to drop it off and pick it back up again later.

An RAC Mobile Mechanics interim service, which costs from £155, includes 25 vehicle safety checks, an oil change, topping up of coolant, brake fluid, power steering fluid and windscreen washer reservoir if required, resetting the service light and providing proof of servicing.

A full service, priced from £185 includes all of above, along with checking the air filter and spark plugs, together with 15 more safety checks taking the total to 40. These include checking the fuel system and tank, the condition and tension of auxiliary drive belts (not timing belt), and the condition of brake fluid.



■ Minister for Roads and Buses Richard Holden with RAC Mobile Mechanic Indy Singh

For those who don't require a full or interim service, a vehicle diagnostic check along with an on-site fix or a garage recommendation is £65. Customised quotes for repairs are available via;

www.rac.co.uk/car-care/mobile-mechanic.

To find out more and to book an RAC Mobile Mechanics' service go to www.rac.co.uk/car-care/mobile-mechanic.

The RAC also provides an Service and MOT Plan, letting drivers spread the cost of routine servicing and MOTs over two years so they don't have to pay big bills all in one go – and with no risk of prices increasing.

Could Motorcycles Help Solve Traffic Congestion And Poor Air Quality In Britain's Cities?



New research commissioned by the UK's leading road safety charity, IAM RoadSmart, shows that the public are divided about the benefits of motorcycling in improving air quality and traffic flow, leading the charity to raise awareness about the potential motorcycles possess in easing congestion and reducing emissions.

The charity surveyed over 2,000 motorists, with just one-in-five (22 per cent) of respondents stating that motorcycles improve air quality, although motorcycles actually produce less than half the emissions of cars, or even less in some cases.

Meanwhile, less than half (42 per cent) of those surveyed recognised that motorcycles help reduce traffic congestion. This shows that the majority were unaware of the potential positive impact – if there was just a 10 per cent shift to motorcycles, congestion would drop by 40 per cent and heightened emissions from stop-start traffic would reduce.

IAM RoadSmart recently launched a campaign recognising the importance of motorcycles, bringing attention to the critical role motorcycles could play in addressing concerns around air quality. This is especially important in the short term, during the crucial transition period as fossil-fuelled vehicles are phased out.

Despite the potential benefits of motorcycling, the UK government's response to addressing traffic and improving air quality has so far overlooked motorcycles, and has instead focused on policies such as prioritisation of 'active travel', such as cycling and walking, investment in public transport and implementation of Ultra Low Emission Zones (ULEZ).

To learn more about IAM RoadSmart's motorcycling campaign, recognising them as vulnerable road users, visit www.iamroadsmart.com.

Squires Cafe

What's on @ Squires, JULY 2023;

Sat 1st - Harris Owners Club Meeting

Harris owners club are having a meeting and inviting any non-members with the Harris to turn up and say hello.

Facebook event link;

www.facebook.com/events/1054292785511530?ref=newsfeed

Tues 4th - Japanese Car Meet

The monthly Japanese car meet (evening) - £2 entry per car

Sat 8th - Yorkshire Blacksmith Meeting

The Yorkshire Blacksmith group meet at Squires on the 2nd Saturday of each month between 11am and 3pm. If you are interested please come down and join in

Sat 22nd (AM) - Autojumble

Our monthly autojumble. Pitches are £5 each for sellers



Visit www.squires-cafe.co.uk for more details



INDEPENDENT VW, AUDI, SKODA & SEAT SPECIALISTS

Mechanical

Electrical & Body Repairs

Full Servicing & MOT Testing Station

VAG Trained Master Technicians

Full Engine Diagnostics

Air Conditioning

CALL 0113 276 59 51/52

W: www.ivcleeds.co.uk

E : info@ivcleeds.co.uk

A: 16 Pontefract Road, Leeds LS10 1TB

10% OFF
LABOUR SERVICING & TIMING BELTS

WITH THIS YORKSHIRE REPORTER ADVERT



A customer reassurance scheme financially backed by the Independent Garage Association (IGA)

HOME INTERIORS & EXTERIORS - YOUR LOCAL TRADERS

HIRST & HANKIN

BESPOKE KITCHENS • BEDROOMS • STUDIES

WWW.HIRSTANDHANKININTERIORS.CO.UK

DARREN@HIRSTANDHANKININTERIORS.CO.UK

TEL | 0113 4690 439

MOB | 07831 127 737



Fitting Kitchens & Bedrooms in East Leeds for over 20 years

- CONSIDERATE WORKMANSHIP
- AFFORDABLE PRICES
- FREE PLANNING & DESIGN
- HIGH QUALITY FINISH
- LOCAL BUSINESS



KITCHENS • OFFICE • STORAGE • BEDROOMS • FLOORING

5 ★ CUSTOMER REVIEWS

“JUST WOW, WHAT AN AMAZING JOB”
“THE SERVICE PROVIDED WAS EXCELLENT IN TERMS OF QUALITY & VALUE FOR MONEY.”

PERFECTION CARPETS

ENGINEERED WOOD - VINYL - LVT - LAMINATE

SPECIAL READER OFFER

FREE RUG ON ALL ORDERS IN APRIL WHEN QUOTING YORKSHIRE REPORTER

Free Measuring Service & Quotes

Shop At Home Service

Family Run Business

Conscientious, Considerate Service For Pensioners

653 Roundhay Road, Oakwood LS8 4BA | 0113 345 33 04

email: perfectionflooring@me.com | [PERFECTION CARPETS.co.uk](https://www.perfectioncarpets.co.uk)

HIGH QUALITY BRAND

BEDS & MATTRESSES

ADJUSTABLE BEDS & BEDROOM FURNITURE

FREE PILLOWS* with this advert when you purchase a complete bed.

36 Smyth Street, Wakefield. WF1 1ED

t: 01924 217712

e: bedsplus2020@hotmail.com

SHACKLETONS Handmade in England MILLIE M ROSE Rest Assured MILLBROOK BEDS HANDMADE ENGLISH BEDS SINCE 1966 Silentnight Sealy
*One pillow with a single and 2 pillows with a double or larger. Complete bed comprises of base, mattress and headboard.

DoorCanopy.co.uk

Welcome To Door Canopy, The Local Business With A Nationwide Installation Service

150+ GOOGLE, TRUSTPILOT & WEBSITE REVIEWS

FREE REMOVAL & DISPOSAL OF EXISTING YOUR CANOPY*

*Subject to survey

Choice of styles & colours made from high quality GRP
Contact Door Canopy for a **FREE** quote

Call: 0800-0226679 Email: sales@doorcanopy.co.uk

HOME INTERIORS & EXTERIORS - YOUR LOCAL TRADERS

MRD Locksmiths
Leeds Locksmith Service
 Locks Changed - Lock Repairs
 Lock Out Service - Upvc Lock Specialist
 Based In LS15 Covering All Leeds
 Free Call Out - Fixed Prices
 For 5% Discount Quote MRD43

0113 254 93 27 - 07990 70 94 56

SAME DAY GARAGE DOOR REPAIRS
 7 DAYS A WEEK 8AM - 8PM



● Broken Cables & Spring Repairs
 ● Remote Controls Fitted & Repaired
 ● Locks Replaced ● New Doors Fitted

CALL GARY GARFORTH
0113 282 0410
07860 382 984
www.firstgaragedoors.com

ALL AREAS COVERED
 CALL FOR A
 VERBAL QUOTE
 TODAY

HOME INTERIORS & EXTERIORS - YOUR LOCAL TRADERS

**"ENSURE YOU'RE
 SECURE WITH TRUEDOR
 COMPOSITE DOORS"**

Truedor



**ONLINE DOOR
 DESIGNER**

**TRUEDOR COMPOSITE DOORS ARE FITTED
 WITH HIGH SECURITY MULTI-POINT
 LOCKING SYSTEMS AS STANDARD**



**5 STAR SECURITY PERFORMANCE
 WITH THE KINETICA 3 STAR CYLINDER**

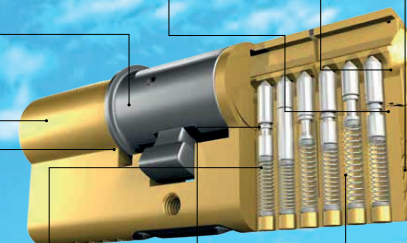
Over 800,000
 different key
 combinations!

Easily keyed alike to
 UAP+ 1 Star Cylinders
 and UAP 6 pin Rim
 Cylinders

Can be re-pinned
 as a keyed alike or
 mastersuite cylinder

Uses a standard
 keyway - replacement
 keys can be readily cut

Conforms to latest
 EN1303:2012
 standards



**TRULY SECURE
 COMPOSITE DOORS**
**TRIPLE
 HINGE-BOLTS**
**NEW ANTI SNAP,
 BUMP, DRILL & PICK**



ANTI SNAP

Patent applied for anti tilt
 mechanism - In normal anti snap
 cylinders once a cylinder is snapped
 at the outside end, the inner section
 is heavier and will tilt allowing the
 burglar a small gap to gain access to
 the bolt. But the Fullex anti tilt ring
 stops this happening.

ANTI-BUMP

Patented anti-bump
 timing pin system - This
 very clever system uses
 nickel plated hardened
 steel key pins and driver
 pins to interrupt the
 timing of the pins when
 bumped, and it is highly
 effective.

ANTI DRILL

4 x hardened steel anti-
 drill pins are in each side
 of the cylinder. Plus all
 moving pins are nickel
 plated hardened steel
 50 HRC minimum.

ANTI PICK

Minimum of 3 anti-pick
 pins in each side of
 the cylinder makes it
 extremely difficult for a
 common burglar to pick
 the cylinder.

FULLY FITTED FROM £995

**2 STAR SECURITY
 DOOR HANDLE**
**SUPERIOR
 QUALITY & DESIGN
 FOR PRODUCT
 LONGEVITY**



MORLEY DOORS & WINDOWS LIMITED
 Unit 6 | Asquith Avenue Business Park | Morley | Leeds LS27 7RZ

t 0113 252 2107

e sales@morleydoors.co.uk | www.morleydoors.co.uk

OPENING HOURS | Mon - Fri 08:30 - 16:30
Sat - By Appointment Only | Sun - CLOSED

Great Value & Easy Access
Walk In Showers & Baths

**Fully Accessible Bathroom
 Installation Now From Only £5,995**

**Our easy access showers
 come with everything you
 need included in the price!**

- ✓ Low threshold access
- ✓ Anti-slip shower tray - guaranteed for a lifetime
- ✓ Glass shower screen
- ✓ Easy to use lever taps
- ✓ 2 x Grab rails, 1 x Soap basket
- ✓ Shower riser rail kit
- ✓ Waterproof wall boarding
- ✓ Fold flat comfortable shower seat
- ✓ FREE Installation
- ✓ Fitted in 24-48 hours



**MADE IN
 BRITAIN**

Call Budget bathing FREE On
0800 464 7975
www.budgetbathing.co.uk

**Budget
 bathing**
 Mobility bathing on a Budget

GARFORTH ELECTRICAL LTD

0113 286 38 11

07703 020 260

www.garforth-electrical.co.uk

Email: info@garforth-electrical.co.uk

ELECTRICAL

- House Rewires Full / Part • Underfloor Heating
- Fire Detection Systems • RCD Fuse Boxes
- LED Lighting & Extra Sockets • Emergency Lighting
- Intruder Alarms (Smart Systems) • CCTV Systems
- Outdoor Security Lighting • Garden Lighting & Power
- Home Buyers Mortgage Surveys
- Replacement Aerials / Points / Boosters
- Electrical Installation Condition Reports
- Portable Appliance Testing • Cat 5/6 Data Points

GAS, PLUMBING & HEATING

- Gas Boiler Servicing • General Plumbing
- Unvented Cylinder Installations / Servicing
- Wet Underfloor Heating Repairs
- Chimney Stack Smoke Testing
- Replacement Gas Fires • Bathroom Suite Tiling
- New Gas Boilers - 7 Year Warranty
- Copper Gas Pipe Size Upgrades
- Home Buyers Gas Mortgage Surveys
- New Bathroom Suites • Blocked Toilets & Sinks

All Work Is Carried Out By Gas Safe Engineers  



**ST ROOFING &
 MAINTENANCE
 SERVICES LTD**

» Roof Repairs

» Re-Roofs

» GRP & EPDM
 flat roofs

» Fascia &
 Soffits

» Guttering

» Leadwork

» Pointing

» Painting
 (Exterior)

t: 0113 414 91 76 / 07895 00 46 59

e: info@stroofingandmaintenance.co.uk

w: www.stroofingandmaintenance.co.uk



**Checka
 trade**

WAGGING TALES!

Stay Away From Blue-Green Algae And Keep Your Dogs Safe



The British Veterinary Association (BVA) is urging pet owners to take steps to keep their dogs safe when walking near freshwater bodies this summer, as the warm weather brings with it an increased risk of toxic blue-green algae growth.

Blue-green algae, or cyanobacteria, is a group of bacteria that can contain dangerous toxins which can be harmful and potentially fatal to pets, livestock and birds if ingested even in small quantities. The algae may appear as green or greenish-brown scum on the surface of water like lakes and ponds. Dogs can swallow it by drinking water from an affected lake, river or pond or while licking their fur after

going for a swim. It's also possible for dogs to come into contact with it even if they don't go for a paddle, as toxic blooms may be blown to the edges of water bodies.

The warning comes after several recent news reports of algal bloom sightings in lakes, ponds of rivers around the UK. Confirmed sightings are identified by the UK Centre for Ecology and Hydrology's (UKCEH) Bloomin' Algae app, which encourages people to submit details and photos if they suspect they have spotted it.

British Veterinary Association President Malcolm Morley said: "Lots of dogs love water and won't hesitate to dive straight in when they see a lake or go for a paddle in a pond. But toxic blue-green algae is very difficult to identify and, if ingested, can make dogs seriously unwell – and can even be fatal. We're urging pet owners to keep their dogs on leads near water bodies where blue-green algae has been confirmed or, if unsure if a water body is safe, to keep them away from it completely. It may seem a shame to spoil your dog's fun, particularly if they are used to swimming somewhere, but if you are unsure it is safe, it is not worth the risk.

"Being aware of the symptoms of exposure is also vital as there is no known antidote for the toxins and prompt treatment is critical to help give a chance of recovery. Symptoms can appear within a few minutes or hours of exposure, and commonly include vomiting, diarrhoea, drooling, disorientation, trouble breathing, seizures, and blood in faeces. If you have any concerns or are worried your pet may have had contact with blue-green algae, speak to your vet as soon as you can."

Top Tips For Pet Owners

- Look out for any warning signs near water bodies.
- Keep pets on a lead and by your side around water bodies known or suspected to have a blue-green algal bloom – don't let pets swim in it or drink from it.
- If your dog has been swimming outside, wash its coat thoroughly with clean water afterwards.
- Seek emergency veterinary treatment if you're concerned your pet may have ingested toxic algae.
- Report sightings of suspected blue-green algae with a photograph via the Bloomin' Algae app. You can also set up notifications for confirmed sightings in your area.
- There are other ways to help your dog keep cool in the warmer weather: paddling pools can give them somewhere to cool off and you should always make sure they have access to clean water and shade if outdoors.

The Most Expensive Dog Breeds To Insure, According To New Study

New research has revealed the 10 most expensive dog breeds to insure, with the English Bulldog taking the top spot.

Insurance specialists at A-Plan Insurance analysed data to discover the average monthly cost of pet insurance for different breeds in the UK to determine the ranking.

Taking the title of the most expensive dog breed to insure is the English Bulldog.



They're sweet-natured, excellent with children, and don't require too much exercise – but with this breed, you can expect an average insurance cost of £66.50 a month, equating to £798 annually. Due to being flat-faced, English Bulldogs suffer from brachycephalic syndrome, which consists of long-term breathing problems as well as difficulty cooling down in warm weather.

Second on the list is the French Bulldog, descendants of the English Bulldog. The breed is favoured by many celebrities including David Beckham and Hugh Jackman, and their small size and quiet demeanour makes them loveable to say the least; however, the breed has an average cost of £54.73 each month, making that £656.76 a year. Not only are French Bulldogs brachycephalic like the English Bulldog, but they are also prone to Intervertebral Disc Disease (IVDD), which causes problems like back and neck pain and difficulty walking.

Third is the German Shepherd, known to be one of the most loyal dog breeds, not to mention that they are one of the smartest. However, while these are desirable traits, insuring this breed will set you back £38.15 a month – or £457.80 a year. Over the years, German Shepherds have been bred to enhance some features which has led to lots of health issues, Hip Dysplasia being one of these; this condition consists of symptoms like groin pain and limping.

Fourth on the list is the Labrador Retriever.

They are one of the most common breeds used for guide dogs, so their intelligence can't be doubted; but the average cost of insurance for this breed is £31.24 a month, making that £374.88 annually. Labs are high at risk of Arthritis due to having problems with their joints, which can cause limping, a stiff walk, and irritability.

Fifth in the ranking is the Golden Retriever.

Known for being playful, affectionate, and easy to train, Golden Retrievers make great family dogs. Although, £24.30 is the average monthly cost of insurance which equates to £291.60 a year. Golden Retrievers have a high chance of developing cancers such as Lymphoma, which includes symptoms like difficulty breathing, loss of appetite, and weight loss.

The Miniature Schnauzer is sixth in the ranking. This breed is hypoallergenic, so they can be a great choice for those with pet allergies – but their insurance cost is an average of £24.16 a month, or £289.92 a year. Miniature Schnauzers are predisposed to Pancreatitis, a disease which can cause repeated vomiting, dehydration, and even a hunched back.

Seventh on the list is the English Springer Spaniel.

Due to their friendly nature and their ability to learn quick, they are a good fit for first time dog owners – but with them comes an average insurance bill of £23.20 a month, equating to £278.40 annually. Springer Spaniels are susceptible to Patent Ductus Arteriosus, a heart condition which can cause shortness of breath, weak limbs and weight loss.

In eighth place is the Cocker Spaniel, a high energy breed that thrives outdoors – making them a perfect match to an active owner. Insuring Cocker Spaniels costs an average of £22.72 a month, or £272.64 a year. Chronic Hepatitis is one of the health issues that many Cocker Spaniels can suffer from, a condition associated with the liver; symptoms include weight loss, vomiting, and even seizures.

Crossbreeds take the ninth spot on the list, with an average insurance cost of £22.67 each month, or £272.04 for the whole year. As different breeds have different personalities, owners can never predict the traits of a crossbreed – so they're suitable for owners who aren't too picky. While health issues in these dogs can vary depending on what breeds they are a mix of, there's a risk of conditions such as Hip Dysplasia and Arthritis which are common across many breeds.

Last on the list is the Border Terrier.



They are known to be low-maintenance, eager to please, and they also get along well with other dogs if they are well-socialised from being a puppy. Insuring border terriers will cost an average of £17.84, or £214.08 annually. Cataracts are common in older Border Terriers, a condition which can cause blindness if left untreated.

A spokesperson from A-Plan Insurance has commented on the findings:

"Across the UK, 10 million households own a dog – they make loyal companions, reduce loneliness, and can generally improve our quality of life. Not to mention, daily dog walks increase physical activity, therefore benefitting our physical health."

"However, it's important to consider the additional costs when owning a dog. While you may have the perfect dog breed in mind, the cost of insurance can vary across breeds due to things like hereditary conditions. So, it's important to consider the price of insurance and not just the cost of the pet itself to ensure that it won't set you back too much."

Wakefield Animal Hospital Saves Puppy From Debilitating Illness



Intensive care treatment at a Wakefield animal hospital has seen a puppy recover from severe muscle and kidney damage after eating cattle bolus.

Eight-month-old Bella, a springer spaniel, was presented with weakness and salivation to Linnaeus-owned Paragon Veterinary Referrals emergency service following ingestion of monensin, a slow-release cattle bolus, causing rhabdomyolysis (muscle breakdown).

Her clinical signs included weakness on all four limbs, muscle pain, panting and anxiousness.

Initial treatment at the referring vet included treatments to try to prevent ongoing absorption of the toxin and counteract its effects.

However, despite this her signs worsened over the following few days and so she was referred Paragon's intensive care unit (ICU).

She received 24-hour monitoring and care together with careful monitoring of her kidney function and gentle physiotherapy. Bella showed gradual recovery and was able to be discharged a week later.

Jennie Good, critical care specialist at Paragon, who led Bella's treatment together with Adam Bell, internal medic and cardiologist, and Sophie Adamantos, clinical director and specialist in emergency and critical care, said: "The degree of signs seen was extremely severe and usually it is fatal when it is so bad. We have never seen such severe evidence of muscle damage.

"Increases in muscle enzyme indicate muscle damage. Usually, it is under 350 but Bella's was more than 1,000,000, which is extraordinary."

Sophie added: "Bella received 24-hour care in our ICU and, as she started to recover, gentle physiotherapy was introduced to help repair the muscle damage she had suffered. She made an incredible recovery and, once home, the owner struggled to keep her rested."

Owner Robert Stephenson from Carnforth said: "Bella's an inquisitive puppy and she found what I thought was an empty, regurgitated cow bolus, when in fact it still had slight traces of the product left in it, which she chewed on.

"I was in complete shock as to how poorly she was. She was very close to losing her life, but was expertly diagnosed by our local vets and then subsequently had exceptional treatment by the team at Paragon."

Paragon provides expert care in anaesthesia and analgesia, cardiology, dermatology, diagnostic imaging, internal medicine, neurology, oncology, ophthalmology, orthopaedics and soft tissue surgery.

For more information on Paragon Veterinary Referrals, visit www.paragonreferrals.co.uk or search for Paragon Veterinary Referrals on social media.

Dorothy's Dog Drops In Popularity

The historic British breed, the Cairn Terrier, which came to fame as Toto in the Hollywood classic the Wizard of Oz, could be at risk of disappearing, according to statistics released by The Kennel Club.

Annual puppy births from the dog registration body shows a significant fall in numbers – in the first quarter of 2023 the breed has seen a 42 per cent decrease in popularity compared to the same period in 2022. The small Scottish breed is already facing an uncertain future, with their numbers having more than halved in the last decade, dropping from 1,085 annual puppies born in 2013 to 492 in 2022.

During the 1930s, the Cairn Terrier was in the top five most popular breeds in the country before the decade ended with the release of the Wizard of Oz, one of the first ever colour films, in 1939, which included one of the most well-known dogs in film – Dorothy's beloved Cairn Terrier, Toto. Following the release of the film, the breed's popularity flourished, growing from 481 puppies registered in 1940, before seeing a 658 per cent increase in just seven years, with 3,645 puppies registered in 1947.

While numbers fluctuated over the years, Cairn Terrier popularity peaked in 1989, with over 4,000 puppies born that year. However, the numbers of the breed have taken a nosedive in recent times, with 2022 figures revealing that they had more than halved in a decade, and if the current rate of decline continues, they will enter The Kennel Club's Vulnerable Native Breeds list, which highlights British and Irish breeds which are at risk of disappearing from our streets and parks due to low puppy births.

Bill Lambert, spokesperson for The Kennel Club said: "The Cairn Terrier is an iconic breed, best known as Toto, but also as a firm family favourite, so the low numbers we are currently seeing are very worrying.

"Cairn Terriers are active and fearless little dogs who make a great pet for the right owners. We have such a rich diversity of dogs in this country, with over 200 different breeds, and we urge would-be owners to make sure they spend time researching to find the right one for them, and are prepared for their various needs, such as grooming, exercise and training requirements.



Other British breeds have also seen a worrying start to the year, with numbers dropping across such family favourites as the Airedale Terrier (49 per cent decrease compared to this time last year), Irish Setter (48 per cent decrease) and the Pointer (42 per cent decrease).

More about vulnerable breeds and The Kennel Club's campaign to save them can be found via:

www.thekennelclub.org.uk/getting-a-dog/are-you-ready/vulnerable-native-breeds



New state of the art main surgery at Temple House with silver ISFM cat friendly accreditation

Convenient local branches throughout Leeds

Experienced, friendly team with special interests in surgery (including keyhole spays), medicine, feline medicine, cardiology, and dermatology and nurse clinics including senior pet and weight clinics

Excellent parking and extended opening hours at Temple House, 8.30am-7.30pm Mon-Thurs, 8.30am-6pm Fri-Sun



Ask our friendly team about our Pet Health Club

The affordable plan to keep your pet healthy

Temple House Surgery

Limewood Approach, Seacroft, Leeds LS14 1NH
0113 264 5422

Crossgates Surgery

132 Austhorpe Rd, Leeds LS15 8EJ
0113 294 0660

Chapel Allerton Surgery

335 Chapeltown Rd, Leeds LS7 3LL
0113 262 1189

Beeston Surgery

430 Dewsbury Rd, Beeston, Leeds LS11 7LJ
0113 270 0325

Garforth Surgery

28 Springmead Dr, Garforth, Leeds LS25 1JW
0113 232 0030

SCAN ME

 @BeechwoodVets

beechwoodvets.com



SHACKLETONS

Handmade in England

60
EST. 1959
OVER 60 YEARS OF HANDMADE CRAFTSMANSHIP

Our Promotional Offers



Bridgwater
High Back Chair

**10%
OFF**

- 17, 18, 19 or 20" seat heights
- Cushion or Button Back
- Wooden Grab Handles
- 5 Year Guarantee



Rise & Recliners
with free armcaps

**£100
OFF**

- 3 sizes Petite, Standard & Grande
- Dual & Single Motor Actions
- Wooden Grab Handles
- 5 Year Guarantee

Our FREE Home Consultation Service is tailored to you, just like our chairs.

If you are unable to visit our showroom, we offer a FREE Home Consultation service

- Tailor made chairs to your style and needs
- Price transparency
- No pressure no obligation
- DBS Checked consultants
- Trained by occupational therapists
- UK manufactured



FOR MORE INFORMATION VISIT:

www.shackletonsretail.co.uk/home-consultation

TO BOOK A HOME CONSULTATION

TODAY CALL: 01924 440 600

Find us at 359 Bradford Road, Batley WF17 5PH

Showroom open 7 days a week. Mon-Sat 9.00am-5.00pm. Sun 10.30am. Free Parking



A cross-sector collaboration with Breast Cancer Now, NHS England and Asda, will provide new, alternative locations for the mobile breast screening units, to be used by the NHS Breast Screening programme, run by NHS England.

Asda has made their car parks, in specific regions, available, in a bid to increase convenience and visibility of vital breast screening services in England. The announcement was made as part of an Asda Parliamentary event, hosted by Matt Vickers MP, which focussed on supporting community organisations, utilising store space and fundraising for national charities.

This initiative launches in Asda's 27th year of supporting breast cancer charities through its Tickled Pink Partnership. Central to this, is a commitment to support early diagnosis of the disease by helping normalise breast awareness, encouraging a million more people in the UK to check their breasts more regularly and raising funds for Breast Cancer Now and CoppaFeel!

Asda is currently hosting three mobile breast screening vans in England, as well as one in Scotland, and looks forward to working

with regional commissioning teams across England to identify further locations where mobile breast screening vans can make a difference. This will be based on an assessment by local Breast Screening Services, and should the offer be right for specific communities, work in lockstep with the routine invitation cycle.

This positive initiative will also help contribute towards wider efforts to increase visibility and awareness of the importance of breast screening and encourage more women to take up their breast screening invite.

Baroness Delyth Morgan, Chief Executive at Breast Cancer Now said:

"We're delighted that NHS England and our long-term partner, Asda, are working together to improve the convenience of vital breast screening, with ASDA offering many of their car parks as locations for breast screening vans in England. Breast screening is a key tool for detecting breast cancer early, as critically, the sooner the disease is diagnosed, the more likely treatment is to be successful. As such, we welcome this important initiative which

will help improve people's awareness of breast screening and could provide this vital service in new areas of the community."

Dr Nisha Sharma, Director of Breast Screening and Clinical Lead for breast imaging at Leeds Teaching Hospital NHS Trust, said:

"Breast Screening is a vital tool in detecting cancers at an earlier stage, which can make all the difference, and we're so pleased to have this local Breast Screening mobile unit in Morley Asda car park available, providing a convenient and accessible option to so many women."

Jo Warner, Senior Director Corporate Responsibility and ESG/Asda Spokesperson, said:

"With breast screening attendance declining in recent years, we knew we could do something practical to help. Opening up space in our car parks to host mobile screening units felt like a natural extension to three decades of fundraising and breast cancer awareness raising efforts – and our hope is it will help to improve visibility and convenience of screening and ultimately drive earlier diagnosis and better outcomes for those affected by breast cancer."

Jeanette Lane, who works on the kiosk at Asda Dagenham, knows all too well how important it is to attend routine breast screening. Following her mammogram in March 2018, the results found invasive breast cancer in one breast and non-invasive breast cancer in the other breast. Following numerous biopsies, it was confirmed Jeanette had invasive lobular breast cancer. Jeanette then had biopsies on her lymph nodes in July, and in August 2018, Jeanette had a double mastectomy with immediate first stages of reconstruction, followed by radiotherapy. She then went on to have full reconstruction surgery in 2019.

Jeanette said:

"The one thing I would say to everyone is to keep checking yourself regularly, and don't miss any routine mammograms. If I hadn't attended my mammogram appointment, I would never have known about my breast cancer."

Following years of declining breast screening attendance in England, this availability of alternative mobile screening unit locations comes as Breast Cancer Now's #NoTimeToWaste campaign calls on the government to urgently invest in the NHS Breast Screening Programme, to guarantee its accessibility to all eligible women, and ensure it has enough staff and resources to offer the care women deserve, now and in decades to come.

That is why Breast Cancer Now is calling on the government to deliver a sustained national media awareness campaign promoting the importance and availability of breast screening in England, focused especially in areas and communities where uptake is lowest.

NICE Recommendations...

Targeted Treatment For A Genetic Mutation Of Advanced Lung Cancer Recommended For The Cancer Drugs Fund

NICE has recently published final draft guidance recommending selpercatinib (Retsevmo, Eli Lilly) for untreated RET fusion-positive advanced non-small-cell lung cancer (NSCLC) for the Cancer Drugs Fund (CDF). Around 150 people a year in England could be eligible to receive this treatment.

Selpercatinib is taken as a capsule twice a day at home. It is a targeted therapy that blocks a protein called rearranged during transfection (RET). Abnormal genes can cause the RET protein to fuse with another protein. The 'RET fusion' leads to uncontrolled cell growth and cancer. By inhibiting RET, the treatment can slow the growth of cancer cells.

RET fusion-positive lung cancer tumours occur in around 1-2% of people with NSCLC and is more commonly found in people who are under 60-years-old and with fewer other diseases or health conditions and is often diagnosed at a late stage.

The standard treatment for untreated RET fusion-positive advanced NSCLC is pemetrexed plus platinum-based chemotherapy and pembrolizumab plus pemetrexed and platinum-based chemotherapy. Selpercatinib provides another first-line treatment option.

Selpercatinib is already recommended by NICE through the CDF for previously treated RET-fusion positive advanced NSCLC.

Clinical trial evidence suggests that selpercatinib could increase how long people live and how long they have before their cancer gets worse. However, because the clinical and cost-effectiveness estimates are uncertain, selpercatinib is not recommended for routine use but is through the CDF to allow more long-term data on survival rates to be gathered.

The company has a confidential commercial arrangement with NHS England, which makes selpercatinib available with a discount.

You can read the full final draft guidance on selpercatinib for untreated RET fusion-positive advanced non-small-cell lung cancer on www.nice.org.uk.

First Treatment To Target Heart Condition Set To Benefit Thousands

Around 7,000 people with a heart condition called obstructive hypertrophic cardiomyopathy (HCM) will now be able to access the first treatment that specifically targets the disease after NICE approved mavacamten for use in the NHS in final draft guidance published recently.

The draft guidance recommends mavacamten (also called Camzyos and made by Bristol-Myers Squibb) as an add-on to (non-disease specific) standard care that aims to control symptoms. This includes beta-blockers, non-dihydropyridine calcium channel blockers or disopyramide, unless these are contraindicated.

Clinical trial evidence suggests that mavacamten plus standard care is more effective than standard care alone, and that it may avoid or postpone the need for invasive surgery.

Obstructive HCM is a chronic disease which in 50% of cases is caused by an inherited genetic mutation. It is characterised by

excessive heart muscle contraction which causes it to become thickened and stiff. As a result, the heart may fail to pump enough blood to meet the body's needs.

These impairments to heart function can cause debilitating symptoms including tiredness, dizziness, shortness of breath, chest pain and palpitations. This can have a severe and wide-ranging impact on quality of life.

HCM can also lead to a range of complications including arrhythmias (irregular heartbeat), heart failure, stroke and sudden cardiac death. Some people with uncontrolled symptoms may choose to have surgery.

Helen Knight, director of medicines evaluation at NICE, said: "The draft guidance is another example of our commitment to drive early access to innovative new treatments – in this case a treatment which is yet to be licensed for use in the UK.

"Obstructive hypertrophic cardiomyopathy is a disease for which, until now, there has been no specific treatment that targets its underlying cause. It has a very high and wide-ranging impact on quality of life and because it can develop at any age, it can occur in younger people who may formerly have had very active lifestyles.

"The treatments currently used to try to manage symptoms are associated with side effects and are often ineffective. We're therefore pleased to be able to recommend a treatment that has the potential to alter the course of obstructive hypertrophic cardiomyopathy and offer greater hope to people with it."

The draft guidance recommends mavacamten for adults with HCM whose symptoms mean ordinary physical activity results in fatigue, palpitations or shortness of breath (New York Heart Association class 2 to 3).

NICE National Institute for Health and Care Excellence



A time capsule that captures the inner workings of a pathology laboratory has been interred within the grounds of the new Centre for Laboratory Medicine at St James's University Hospital (SJUH).

Featuring items from working laboratories such as test tubes and PPE equipment, pathology staff profiles including one from a current apprentice and a letter from Leeds Teaching Hospitals NHS Trust Chief Executive, Professor Phil Wood, the time capsule hopes to provide a glimpse of what pathology is currently like for those who come to open it in 2098.

To mark the recent National Pathology Week, an interment event was held at the newly named Centre for Laboratory Medicine – a new state-of-the-art pathology laboratory that is due to complete construction this month.

Trust Chair, Dame Linda Pollard, Professor Phil Wood and Simon

Worthington, Director of Finance and Senior Responsible Officer for the Building the Leeds Way programme were joined by pathology staff to inter the capsule close to the entrance of the new lab where it will remain for 75 years.

Professor Phil Wood said: "Pathology plays a crucial part in the delivery of front-line care, helping us to diagnose and therefore treat diseases and this time capsule is a fantastic opportunity to recognise the service both now and in years to come.

"Pathology has changed considerably during my own time at Leeds Teaching Hospitals NHS Trust with digital pathology coming to the fore and with the advancements being made to the way we diagnose, treat and care for our patients in the wake of COVID-19.

"As we approach the NHS' 75th birthday, I've no doubt that things will be very different once again when our future pathologists come to open this in 2098."

Construction has almost completed on the new laboratory with contractors BAM on track to hand the building back to the Trust this month.

The Centre for Laboratory Medicine will be part of the West Yorkshire and Harrogate Pathology Network, formed through the collaboration with the West Yorkshire Association of Acute Trusts (WYAAT) and will support the delivery of pathology services across West Yorkshire with advanced equipment and new technologies to support innovative testing and diagnostics.

Pathology is one of the key projects in Leeds Teaching Hospital's Building the Leeds Way Programme of capital investment and improvements.

Currently, most of the Trust's pathology services are delivered from outdated facilities in the Old Medical School at the Leeds General Infirmary (LGI) as well as from St James's Hospital.

The new building will bring many of these services together into one purpose-built facility and once vacated, the Old Medical School will be repurposed as part of a plan to use surplus estate at the LGI to develop an innovation village which is expected to deliver up to 4,000 new jobs and almost £13bn in net present value.

Bringing these pathology services together into the new building will support the delivery of faster, more accurate routine and specialist testing and will help to drive improvements in diagnosis for patients across the region.

Some pathology services from Mid Yorkshire Hospitals NHS Trust and Calderdale and Huddersfield NHS Foundation Trust will also move into the new facility to enable routine and direct access testing from fewer sites and will create better working environments for staff and more standardised results for patients.

Simon Worthington said: "Our new facility is now one step closer to driving improvements in the way we diagnose patients, not just in Leeds but those living right across West Yorkshire and Harrogate.

"The new pathology service will help to meet the growing regional demand for specialist treatment and care whilst providing development opportunities for staff which will be created through the use of new state-of-the-art facilities and equipment."

Construction of a new Acute Hospital Laboratory is also underway at the LGI to provide emergency pathology facilities to support clinical services when the main pathology services at the LGI relocate to the new laboratory at St James's.

New Sustainable Centre To Help Youngsters Cope With Grief

Bereaved children from across the district will receive dedicated care and support at a pioneering new centre.

The state-of-the-art sustainable facility, at St Gemma's Hospice, Moortown, Leeds, will provide a dedicated space for the hundreds of youngsters supported by the hospice's bereavement team each year.

It'll offer a unique, relaxing environment for young people faced with the loss or serious illness of close family members.

The Cabin's environmental credentials endorse the hospice's overall commitment to sustainability.

It's built from low-carbon, highly-insulated structural panels – constructed offsite and then erected within the hospice grounds to reduce carbon footprint and the time required for construction.

To minimise energy consumption, the building has high levels of thermal insulation and will be fully electric. An efficient air source heat pump will be used to heat it through electric underfloor heating.

The Cabin is built on a north-south axis to allow the solar panel on the roof to capture as much sunlight as possible to generate electricity for the building. This solar power will provide a significant amount of the building's annual energy requirements.

Nic Colgan from St Gemma's Young People's Service comments: "The environment where we see children really impacts how relaxed, engaged, and open they can be.

"We've never had a child-friendly space we can use year-round. This dedicated building will include a big area for group activities and play therapy like messy art and sand play; a kitchen for cooking sessions; and racks to display the children's paintings. There'll also be a smaller, quiet room too for counselling.

"It'll be perfect for our 'memory days' when the children make something that reminds them of their loved one who died and talk about their grief."

The St Gemma's Young People's Service supports children and young people when someone in their family is seriously ill or has died.

The team arranges various activities for children of all ages, to help them cope with their feelings and worries. It also extends to children across Leeds whose loved one is receiving, or has received, palliative care.



Leeds' First Dedicated Osteoporosis Bone And Muscle Clinic Opens Its Doors To Patients

A new era in healthcare dawns as Gary Rhodes, Nichola Taylor, Professor Nick Harris and Professor Ernst Schilders proudly announce the opening of Leeds' first dedicated bone and muscle clinic. This pioneering high-end private clinic, equipped with state-of-the-art DEXA technology, is set to revolutionise the diagnosis and treatment of osteoporosis in the region.

"Our approval by the CQC stands as evidence of our unwavering commitment to quality patient care. We are dedicated to changing lives through education and early diagnosis providing effective treatment of osteoporosis," shared Gary Rhodes

The clinic is focused on addressing osteoporosis, offering high-quality diagnosis and tailored treatment plans to patients in need.

Through the diagnosis and treatment of bone and muscle related conditions, the clinic is dedicated to combating conditions such as osteoporosis and Sarcopenia offering high-quality non-pharmaceutical diagnosis and treatment to patients.

As the clinic opens its doors, it ushers in a new standard of healthcare for Leeds, providing comprehensive osteoporosis diagnosis and treatment options under one roof.

As 1 in 2 women over 50 will break a bone due to poor bone health, these

services are integral to their health and wellbeing. Gary Rhodes said this about the need for proper musculoskeletal health; "The stronger we can become, then the more stable on our feet we become, which is going to enhance our life long term, and also make sure we're more independent."

The clinic offers a comprehensive range of services, including early diagnosis of osteoporosis using DEXA technology, personalised treatment plans, and patient education. The clinic's launch represents a significant step forward in the fight against osteoporosis, as Gary and Nichola's unwavering dedication to patient-centric care translates into an innovative and specialised bone and muscle clinic.

The bone and muscle clinic's launch and CQC approval represent a significant step forward in the fight against osteoporosis. Gary Rhodes commented on the achievement. "We see this not just as a mark of recognition for our clinic, but as a symbol of a new chapter in bone and muscle health management in our city.

This recognition propels us further in our mission to revolutionise Muscles and bone and muscle health care in Leeds and beyond."

See more of the clinic here: <https://shorturl.at/nDU35>

SPECTACULAR EYEWEAR

We put new
lenses in
your own
frames &
sunglasses
from

£39 Single
Vision

£59 Bifocal

£79
Varifocal

Bring us your prescription & see what you could save!

**Prescription
sunglasses
from £69.95**

**Sports
Eyewear &
Swimming
Goggles**

**FREE
PARKING**

WHAT MAKES US UNIQUE?

- We treat you as an individual, you're never just a number to us!
- We pride ourselves on offering the highest standards of service
- We are qualified and registered Dispensing Opticians with vast experience on all prescriptions
- We offer some different styles and designs that you won't find on the high street and we constantly update our stock
- Our prices are amazing and backed up by our exceptional aftercare service
- So whether you're after a simple pair of reading glasses, designer style with Varifocal or just lenses into your own frame we're confident you won't find better service and prices so please get in touch or come and visit us at Cross Gates.

119-121 Crossgates Road, Leeds LS15 7PB

NEW Opening hours;

Sunday & Monday CLOSED

Tue to Fri 9.30am – 4.00pm

Sat 9.30am – 3.00pm

Closed for lunch daily 1.00pm – 1.30pm

Tel: 0113 264 60 01

Web: www.spectaculareyewear.co.uk

[@SpectacularEyewearLeeds](https://www.facebook.com/SpectacularEyewearLeeds)



QUIZTIME

WELCOME TO OUR QUIZ PAGE

Every month we give you new and hopefully challenging puzzles for your enjoyment.

Make sure to pick up next month's issue for all this month's answers & solutions.

Wordsearch

T Q E J U S G G E H C T O C S D F
D W E B Y Q J W T C I T N A M O R
S E G A S U A S L I A T K C O C P
C P Z U S S E I P K R O P S K N P
U H T M G T X R G Q R G L A D C S
S N E I R J R I A B V L U O M J Y
E O C R A I Q A B D O S X E G D C
N L O N R H H V W R D G G U E S C
O E V H L Y E T E B L E X Q A H S
C M T K A R T G O K E Q H N H Q K
S R N U P L A O J X Y R D C S U N
D E I D N S L N M L R W R F V V I
K T H E U J C O I A I E G I S J R
T A K A X A S M U C T F B X E T D
Z W S K Z C A N H M P O K L N S J
G F V V L F F E Q N I S E O B O G
U C R I S P S E B B M K H S X Z P

- CHEDDAR
- CHERRY TOMATOES
- COCKTAIL SAUSAGES
- CRISPS
- DRINKS
- FAMILY
- HALLOUMI
- PORK PIES
- ROMANTIC
- SANDWICHES
- SAUSAGE ROLLS
- SCONES
- SCOTCH EGGS
- STRAWBERRIES
- WATERMELON

HOW MUCH INFO HAVE YOU RETAINED?

Can you answer these questions about articles in this edition?



- 1 - Northern is the second largest train operator in the UK, how many services do they run a day to more than 500 stations across the North of England?
- 2 - Which charity is searching for the UK's walking champions?
- 3 - Who are playing Leeds Arena on 17th September?
- 4 - July is National Picnic Month, when was the 'Pic-Nic Society' founded in London?
- 5 - Who are offering an exciting career in the jewellery industry?
- 5 - What is the most expensive dog breed to insure?



WIN A YORKSHIRE DAY CARD, YORKSHIRE ROSE PIN BADGE, YORKSHIRE FLAG & HOW YORKSHIRE ARE YOU BOOK FROM THE GREAT YORKSHIRE SHOP - P35

Sudoku

Just like a regular 1-9 puzzle, only this time using the letters A-L in a 12x12 grid. Good luck!

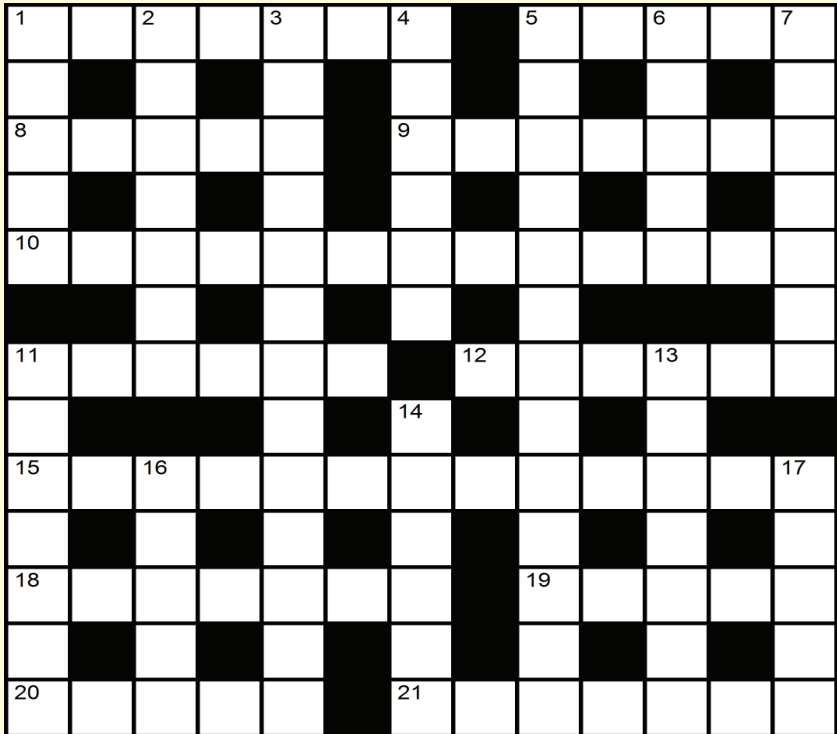
June edition answers

F	C	B	A	D	I	E	J	G	H	L	K
L	K	J	H	B	F	A	C	I	D	E	G
E	H	D	G	K	C	F	B	L	I	A	J
G	A	I	L	E	J	D	K	H	F	C	B
H	D	L	C	F	G	I	A	B	K	J	E
K	I	F	E	J	D	L	G	C	A	B	H
C	E	A	B	L	K	H	F	J	G	I	D
B	J	G	I	H	A	K	D	E	L	F	C
A	B	H	J	I	L	G	E	D	C	K	F
I	G	K	F	C	E	B	H	A	J	D	L
D	L	C	K	G	B	J	I	F	E	H	A
J	F	E	D	A	H	C	L	K	B	G	I

How Much Info Have You Retained answers;

- 1. Over 190 2. April 2025
- 3. Friday 8th September to Sunday 10th September 2023
- 4. Texas 5. Norton V4CR
- Drop Quote Answer; Smile. Have you ever noticed how easily puppies make human friends? Yet all they do is wag their tails and fall over

Crossword



Clues:

Across

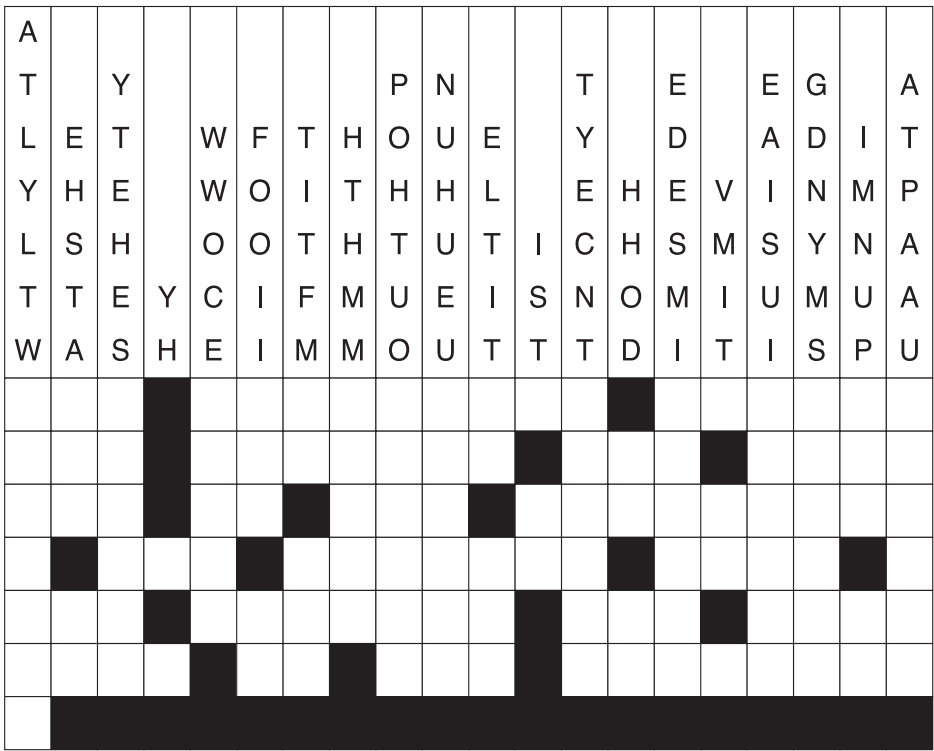
- 1 Vintage
- 5 Yachts
- 8 A Muse
- 9 Consulate
- 10 Inland sea
- 11 Tropical fruit
- 12 Hurls
- 15 Amusement
- 18 Picked up
- 19 Impressive
- 20 Happening place
- 21 Asses

Down

- 1 Best part
- 2 Desert
- 3 Firearm training ground (8,5)
- 4 Cocktail garnish
- 5 Sten gun, e.g. (10,3)
- 6 Edition
- 7 Idioms
- 11 Old VW's
- 13 Run
- 14 Came to earth
- 16 Rag
- 17 Ebbs & flows

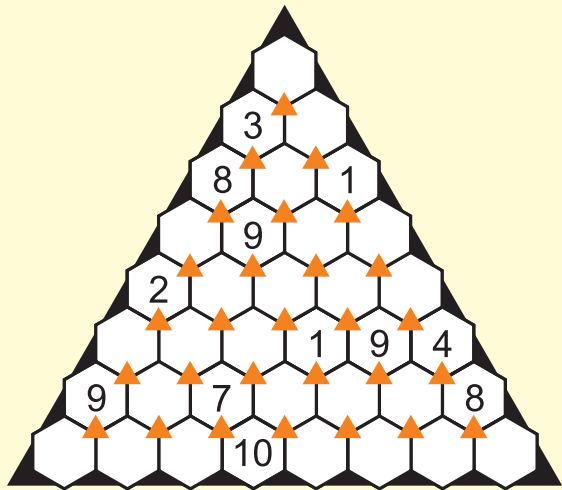
Drop Quotes

Drop Quotes are similar to cryptograms, in that the goal is for the solver to uncover a hidden quote. A black-and-white crossword-style grid is set up for each quote, with a number of letters "hovering" above each column. Your task is to "drop" each of those letters into the appropriate square in each column, until the entire quote is revealed. All punctuation (commas, periods, dashes, etc.) has been removed. Good luck!



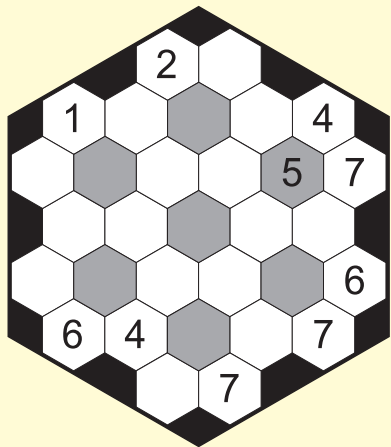
Subaddo 3D

Each orange triangle connects a set of three numbers. Two numbers must add or subtract to equal the third. All numbers must be between 1 and 12 and no number can be repeated in a horizontal row or diagonal row.



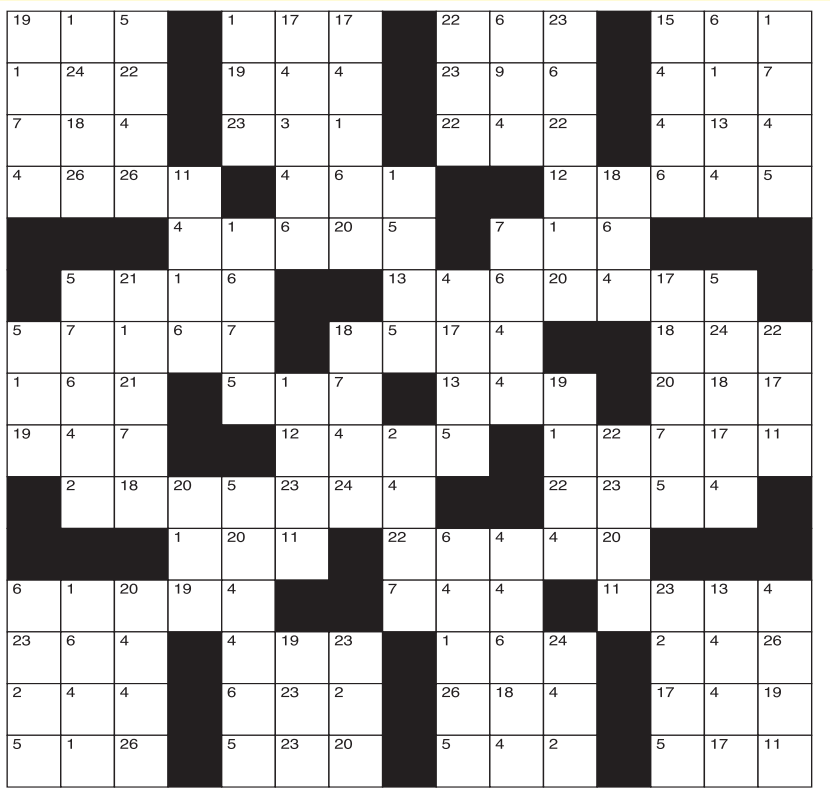
Rosetta

Fill in all 7 Rosettas with each number between 1 and 7 in no particular order while also ensuring that no number is repeated in a horizontal row and each number from 1 to 7 are represented in the 7 grey colored hexagon cells



Clueless Crossword

Think of a Clueless Crossword as a mix between a regular crossword puzzle and a cryptogram. Unlike many crossword puzzles, this grid is filled only with common, everyday English-language words - no abbreviations or other special "crossword" spellings are allowed. Each square in the grid is numbered 1 through 26, and each number corresponds to one (and only one) letter in the alphabet. Your goal is to completely fill in the crossword grid by gradually uncovering the letter that belongs to each number. We've given you three "giveaway" combinations - fill those into the solution grid and into any corresponding boxes in the crossword grid to get started. It helps to cross out each letter in alphabet as you use it in the grid, since no letter can be used more than once. Note that not all letters of the alphabet may be used in any given puzzle. If a number isn't used in the puzzle, it is greyed out in the solution grid.



SOLUTION GRID

1	2	3	4	5	6	7
8	9	10	11	12	13	14
N/A		N/A				N/A
15	16	17	18	19	20	21
22	23	24	25	26		
			N/A			

GIVEAWAYS

#19 = G

#7 = T

#24 = M

A B C D E F G
H I J K L M N
O P Q R S T U
V W X Y Z

Word Scramble

Can you solve these word scrambles?
Each word is taken from this month's edition.

- 1 - ATAD VHSEOR

2 - HILSEARC HMAER

3 - IEBLLI ISEHLI

4 - OCNAE UCLROO NCISE

5 - LOSOMERHYET
- 6 - NPSMOSATC HLAL

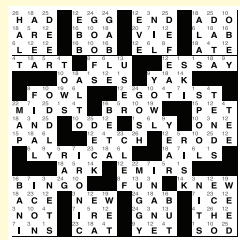
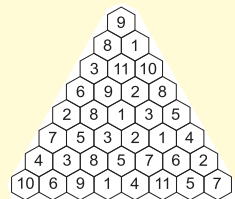
7 - REBDOR RERERIT

8 - SULLSRE ATRNG

9 - SEMGA LMPETE

10 - RZADWI FO ZO

June edition answers



- Word Scramble;
1. Yorkshire Water

2. Christine Talbot

3. Martin Walker

4. Scarborough North Bay

5. Mae Muller

6. Daniel Finkelstein

7. Warren Berman

8. Elmhurst Windows

9. Kettleys Furniture

10. Yorkshire Reporter

WIN A YORKSHIRE DAY CARD, YORKSHIRE ROSE PIN BADGE, YORKSHIRE FLAG & HOW YORKSHIRE ARE YOU BOOK FROM THE GREAT YORKSHIRE SHOP*

The Great Yorkshire Shop hand pick fine goods exclusively from local independent makers, artists and designers of Yorkshire including cards, gifts, foods, art, homeware, beauty and men's products.

All are unique items not found on the high street!

www.thegreatyorkshireshop.co.uk



To enter go to page 34 and answer the 'How much info have you retained' questions then;

Simply send your answers, along with your contact details including tel number to competitions@yorkshirereporter.co.uk

THE WINNER TO COLLECT IN PERSON

The Great Yorkshire Shop,
The Concourse, Leeds Corn Exchange,
Call Lane, Leeds, LS1 7BR

Tel 0113 243 4305

Terms & Conditions – Entries must be in by the 23rd July 2023. The winner will be contacted by phone or email and may be required for a photoshoot of them receiving their prize. Yorkshire Reporter's decision is final and no cash alternative will be offered.

JUNE EDITION COMPETITION WINNERS

The Great Yorkshire Shop competition - Dorothy Clayton

VW Festival tickets - Mark Dickinson & Jane Charlton

Copy of 'Loki: A Bad God's Guide To Ruling The World' - Neil Jackson

Copy of 'Love Theoretically: From The Bestselling Author Of The Love Hypothesis' - Lynne Willox

Copy of 'Pinch Of Nom Budget: Affordable, Delicious Food' - Sue Jarrett

Congratulations!



Monthly Horoscopes By Russell Grant

ARIES March 21st - April 20th

Spending time with family makes you feel treasured, secure and fulfilled on the 1st. It's a good time for a reunion. The Full Moon on the 3rd marks a big career achievement. Reaching this milestone results in a higher paycheque, as well as more prestige. Taking a relaxing vacation is advised on the 9th; if you keep working at the same rate, you'll suffer from burnout. Step up your fitness routine on the 10th. Don't discuss your regimen at work since your boss will resent all the time you're spending on exercise. On the 17th, the New Moon inspires you to find another place to live. An oppressive authority figure will try to crush your spirit on the 22nd. Don't give them the satisfaction.

TAURUS April 21st - May 21st

Your earthy sense of humour makes a great impression on the 1st. Making friends with thoughtful, nurturing people paves the way for a happier future. Inconsistent behaviour can cause problems at home on the 2nd. On the 3rd, the Full Moon finds you returning from a long trip or graduating from a course of study. This recent adventure gives you an air of glamour that's hard to resist. Pursuing a cherished dream feels exciting on the 10th. The New Moon on the 17th inspires a great idea about rearranging your home. A decorating project is favoured for the 23rd. On the 28th, you'll have a flirtatious conversation that makes you glow with happiness.

GEMINI May 22nd - June 21st

Negotiating a salary rise or financial deal will be successful on the 1st; you're able to get the best deal possible, thanks to your wit and charm. The Full Moon on the 3rd brings a big windfall. Use this money to pay off debts, then put the rest into savings. Don't be intimidated by an executive or bank official on the 10th; they're all bark and no bite. Your schedule will pick up on the 11th, prompting you to check your calendar often to make sure you don't miss important meetings. On the 17th, the New Moon attracts another big financial opportunity. You'll enjoy working with the most talented experts in the field. People will be much more receptive to your ideas on the 30th.

CANCER June 22nd - July 23rd

Brilliant contributions make you a popular figure on the 1st; you'll make helpful connections at a social gathering. On the 3rd, the Full Moon marks the conclusion of a partnership. The 9th is perfect for taking a course in a subject you've always loved. Don't bother getting into a war of words with an authority figure on the 10th; you have better things to do with your time. An innovator is impressed with your star power on the 14th; this is the beginning of a great collaboration. The New Moon on the 17th inspires you to adopt an exciting role or change your look in some dramatic way. Going on a long-distance trip for pleasure is favoured on the 20th.

LEO July 24th - August 23rd

Working behind the scenes boosts your professional reputation on the 1st. The Full Moon on the 3rd helps you reach an ambitious health goal; give yourself a prize for having crossed this finish line. Money will go out as quickly as it comes on the 10th, but don't let that bother you. Getting your ideas across will be easy on the 11th. Take this opportunity to go to a job interview or audition. Alternatively, it's a good time to make a public presentation or post a video on social media. On the 17th, the New Moon prompts you to take a much-needed rest. Your charisma will be especially strong on the 23rd; use it to your advantage.

VIRGO August 24th - Sept 23rd

Friendship can turn to love on the 1st; if you've developed tender feelings for someone in your social circle, it's time to confess your crush. Cancelled travel plans on the 2nd fill you with frustration, but you should know that a better plan for getting away is unfolding for you. On the 3rd, the Full Moon brings a romantic situation or creative project to fruition. A burst of energy on the 10th should be channelled into a work project that brings you before the public. On the 17th, the New Moon finds you teaming up with a special person who fills you with confidence. Sneaking off to a private hideaway with a love interest is strongly favoured on the 28th.

LIBRA Sept 24th - Oct 23rd

Your career gets a big boost on the 1st when you get funding for a passion project. On the 3rd, the Full Moon helps you bring a real estate deal to a conclusion. A creative project on the 9th brings you fame and acclaim; it's gratifying to be in professional demand. Don't let limiting beliefs keep you from pursuing your dream job on the 10th. Your social life assumes a glamorous sparkle on the 11th; this is a great time to throw or attend a party. The New Moon on the 17th brings a pay rise, promotion, or high-profile job into your orbit. Someone you knew from childhood or a former job will contact you on the 23rd.

SCORPIO Oct 24th - Nov 22nd

A close relationship is a source of profound excitement on the 1st. Listen to your best friend or romantic partner's advice and take a bold risk. The 3rd finds you graduating with honours from a class, thanks to a supportive Full Moon. Beware of criticising a sensitive person on the 10th; you don't want to discourage a talented artist from creating more work. On the 17th, the New Moon inspires you to travel to a place that has always had an air of mystery for you. Getting into an argument with an expert on the 22nd will be cause for regret; you don't want to make an enemy of this person. Seizing a chance to work for an old employer arrives on the 23rd.

SAGITTARIUS Nov 23rd - Dec 21st

Your personal magnetism is strong on the 1st and will lead to an exciting job offer. Beware of engaging in negative self-talk on the 2nd; replace every critical thought with praise. On the 3rd, the Full Moon brings a big payment for a job well done. Getting a loan, grant, or scholarship will make the 9th an extremely happy time. On the 10th, you'll have to be aggressive about securing a job in a highly competitive industry. The New Moon on the 17th finds you forming a close alliance with someone who brings emotional and financial stability. Striking a healthy life-work balance will be a challenge on the 20th. You'll become more efficient about managing your time on the 28th.

CAPRICORN Dec 22nd - Jan 20th

The Full Moon on the 3rd finds you realising an ambitious goal. Talking with a business or romantic partner on the 7th will inspire a creative project. On the 10th, you should beware of imposing your limiting beliefs on your best friend or amour. What seems like a common-sense safety precaution for you is claustrophobic for your loved one. On the 17th, the New Moon paves the way for a lovely relationship. It's very important to be open to bold ideas on the 20th. Be open to trying a wild suggestion, even if you're dealing with someone who has a lot less experience than you.

AQUARIUS Jan 21st - Feb 19th

Home is where the heart is on the 1st; you may decide to launch a home-based business on this inspiring day. Don't let a hot-headed relative criticise your romantic partner on the 2nd; it's important to set healthy boundaries. On the 3rd, the Full Moon brings an end to a period of solitude. Making money from a passion project fills you with joy on the 9th; it just goes to show you don't have to suffer to generate abundance. The New Moon on the 17th prompts you to launch a health regimen. Beware of lending money to a pushy friend or colleague on the 20th. A former romantic partner will make their way back into your life on the 23rd.

PISCES Feb 20th - March 20th

A romantic relationship on the 1st gives you the courage to take up a course of study that fills you with happiness. The Full Moon on the 3rd finds you wrapping up a collaboration. You should be proud of the progress you've made. Your air of mystery draws an admirer into your web of intrigue on the 9th. If you are already in a relationship, this would be a great time to embark on an adventure with your amour. Going after the object of your desire on the 10th could drive a wedge between you and a friend. On the 17th, the New Moon inspires an empowering art project. A business or romantic partner will encourage you to take a risk on the 20th; do it.



Arts & Flowers

Flowers For All Occasions



❖ Birthdays

❖ Weddings

❖ Births

❖ Anniversaries

❖ Gifts

❖ Thank you

❖ Congratulations

❖ Funerals

Deliver a smile to someone with Arts and Flowers Leeds online flower shop. Whatever the occasion, whether it's a birthday, an anniversary or a just a loving gesture to say thank you, we have the perfect flowers and gifts to send. Flowers can be delivered on the same day or with next day delivery. Fresh flowers hand delivered by US a real local florist!

Leeds Same Day Contactless Flower Delivery please order by 2pm

25 Austhorpe Road, Crossgates, Leeds, LS15 8BA

Tel: 0113 260 5249

Email: shop@artsandflowers.co.uk

www.artsandflowersleeds.co.uk

QUALITY SOFAS & BEDS

Selected Beds



FREE HEADBOARD

SAVE £200



**5FT KING SIZE
FOR
4'6 DOUBLE
PRICE**

Yorkshire's Number 1 Destination for Harrison Spinks Beds & Mattresses



**EX DISPLAY
HARRISON
SPINKS BEDS
40% OFF**



**Ex Display
40% OFF**

Instore Expert

Clearance



Corner Sofas

NEW RANGE



Power Recliners

NEW RANGE



Chesterfields

SASO Superstore Savile Road Castleford WF10 1BJ

www.saso.co.uk Tel 01977 559979 OPEN MON - SAT 9am til 5PM

FREE Yorkshire
Reporter
Your Local Monthly Newspaper

**The smartest
way to advertise
your business**
Call: 0113 273 5000

email advertising@yorkshirereporter.co.uk

ACCEPTING PHONE PAYMENTS FROM



ANIMAL REHOMING



Cats and Kittens Looking
For Safe caring homes
in quiet areas away from
busy roads, we also help
with feral and stray /
Injured Cats

Contact us on 0113 218 82 62

or email us at;
raffertypick@btinternet.com

Registered charity no 801245 www.cat77.org.uk

AROUND THE HOME

**Interior &
Exterior
Painter and
Decorator** *Over 40 Years
Experience*
Tel 0113 270 33 95
Mobile 07778 103 741

P & M

PAVING LANDSCAPING

BLOCK PAVING SPECIALIST

- Resin-Bound • Driveways
- Patios • Pathways • Tarmac
- Concrete • Garage Bases
- Indian Stone Flags • Walls
- Fencing • Artificial Grass Etc

High Power Jet Washing
Cleaning & Sealing
OAP Discounts. Free Est & Advice

Tel: 0113 350 5023 or 07765 924912

AROUND THE HOME

Steamy Windows
Double Glazing Repair

**Specialists In
Replacement Double
Glazed Units**

Ring with sizes for a FREE estimate

0113 335 0576

0800 328 8573

8am - 8pm 7 Days



www.steamywindows.net
Family Company Est. 2003

**Glass and
Glazing Experts**

- Broken and Cracked Glass • Misted Units
Replaced • Boarding Up Service
- Windows/Door Glass • Safety/Security Glass
- Fire Rated Glass • Picture Glass
- Greenhouse Glass • Mirrors • Coloured
Splashbacks • Stained Glass

COMMERCIAL & DOMESTIC PROPERTIES

**Leeds
Glass**

0800 996 1168

www.leedsglass.co.uk



Leeds Glass Windows Ltd 401A York Road Leeds LS9 6TD
T: 0113 248 8433 / F: 0113 248 1649 / E: info@leedsglass.co.uk



Glass cut to size
while you wait



Emergency Rapid
Response Glazing

AUTOMOTIVE



**VW AUDI
SEAT & ŠKODA
SPECIALISTS**

Yorkshire's independent
VW AUDI SEAT & ŠKODA Centre



www.ivcleeds.co.uk
Tel: 0113 276 5951/52
16 Pontefract Road
Leeds LS10 1TB

BUILDERS

BMT

Building & Joinery Ltd

■ Kitchen Fitting Specialists

■ Building / Alterations

■ Extensions / Renovations

■ All Building / Joinery Work
Undertaken

Brad 07944 883 136

Marc 07985 293 982

**AVAILABLE
FROM OVER
500 OUTLETS
EVERY MONTH**

FUNERAL SERVICES

INDEPENDENT FUNERAL SERVICES



**CARROLL &
CARROLL**

Carroll and Carroll will ensure that all bereaved families
specific needs are met, whatever they may be, ranging from
the simple or traditional religious service to anything more
elaborate or personal you require.

Funerals from £1100

**CALL US NOW ON
0113 345 31 60**

125 Easterly Road, Oakwood, Leeds, LS8 2TP



www.carrollandcarrollfunerals.co.uk

www.yorkshirereporter.co.uk

FUNERAL SERVICES

CITY OF LEEDS

FUNERAL SERVICES

Serving Leeds and all surrounding districts



A FUNERAL FOR EVERY BUDGET

DIRECT
FUNERAL
SERVICE**£1150**

- ✓ Coffin
- ✓ Crematorium Fees
- ✓ Doctor's Fees (no attendance)

AFFORDABLE
FUNERAL
SERVICE**£1425**

- ✓ Funeral Director's Fees
- ✓ Coffin
- ✓ Service to take place in our service chapel followed by private cremation.
- ✓ Crematorium Fees
- ✓ Doctor's Fees
- ✓ Minister/Celebrant Fees

SIMPLE
FUNERAL
SERVICE**£1625**

- ✓ Funeral Director's Fees
- ✓ Hearse
- ✓ Coffin
- ✓ Crematorium Fees
- ✓ Doctor's Fees
- ✓ Minister/Celebrant Fees

TRADITIONAL
FUNERAL
SERVICE**£1775**

- ✓ Funeral Director's Fees
- ✓ Hearse
- ✓ One Limousine
- ✓ Coffin
- ✓ Crematorium Fees
- ✓ Doctor's Fees
- ✓ Minister/Celebrant Fees

☒ Online, interactive obituary to share with family and friends

We are able to offer a sympathetic **Funeral Service** to your loved one at an affordable price that we hope will enable you to make arrangements without the worry of inflated prices.

For further information or advice please contact

0113 260 8467
admin@cityofleedsfuneralservices.co.uk
www.cityofleedsfuneralservices.co.uk

DWP Claims catered for

FUNERAL SERVICES

Yorkshire's Only Dedicated Asian Funeral Directors

ASIAN FUNERAL HOME

excellence in compassionate care



Experienced Asian Funeral Directors

The death of someone you love is among life's most painful events. That's why here at Asian Funeral Home in Leeds, we want you to know that you are not alone. We are here to support you every step of the way.

We provide a selection of services and resources to help you through your time of grief with practical and emotional support to help you from registering the death through to funeral planning and aftercare.

Asian Funeral Home are specialists in providing Hindu & Sikh Funeral Services

Funeral Service Options

Unattended Funeral

Where family and friends may have a service, but do not attend the burial or cremation itself

Attended Service

Where family and friends have a service at the same time as they attend their burial or cremation

Religious Funeral

An Attended Service with the additional location such as home or place of worship

Bespoke Funerals

A complete tailored concierge service, available also at weekends. See online for just some of the options we provide

Speak to a funeral specialist

0113 8113 999

24 hour emergency helpline

A: Shanti House, 368 York Road,
Leeds LS9 9EB

Open: Mon - Fri 09:00 – 17:00

E: care@asianfuneralhome.comwww.asianfuneralhome.com

FUNERAL SERVICES

FOR COMPLETE PEACE OF MIND CALL

JOHN P. TEMPEST

FUNERAL SERVICE

Independent family
run business with over
40 years experience

We treat your funeral
needs with sympathy
and understanding

Repatriations to and from
anywhere in the world

Golden Charter
Funeral Plans**0113 239 2700**www.johntempest.co.ukPre paid funeral
plans availableA 24 HR personal, dignified
and caring service

46 Harrogate Road, Chapel Allerton, Leeds LS7 4LA

www.percyrwood.co.uk

Independent family run funeral
directors who will support you
& your family

Here at Percy Wood we can take
care of every aspect of your
service including flowers, cars,
headstones and catering...

At your time of need

- Private Chapels Of Rest •
- Eco Friendly Funerals •
- Pre – Paid Funeral Plans • Mercedes Fleet •
- Repatriation To And From Anywhere In The World •

CALL US 24 HOURS A DAY
0113 270 5015

BALM ROAD, HUNSLET, LEEDS LS10 2HU



FUNERAL PLANS FROM

Kettley's

Aireborough & Wharfedale Funeral Service

**Act now
for one less
thing to worry
about.**

YOUR
WISHES,
YOUR
WAY

**Request your
free information
pack today:**

Golden
Charter

☎ 0113 250 3716

💻 kettleysfuneralservice.co.uk✉ kettleysfuneralservice@gmail.com

Head Office 35-39 Ivegate, Yeadon, Leeds LS19 7RE

ROBSON & ELLIS

FUNERAL SERVICE

**INDEPENDENT LONG ESTABLISHED FAMILY RUN
BUSINESS PROVIDING SYMPATHETIC SUPPORT
DAY & NIGHT FOR ALL TYPES OF FUNERALS**

- Experienced Caring And Qualified Staff •
- Private Chapels Of Rest •
- Pre Paid Funeral Plans •
- Headstones And Masonry •
- Floral Tributes Arranged •
- Mercedes Fleet •
- Horse-Drawn & Motorcycle Hearse Available •
- Repatriation To And From Anywhere In The World •

www.robsonellis.co.uk**0113 257 0542**

OLD EBENEZER CHAPEL, 435 STANNINGLEY ROAD, BRAMLEY, LEEDS LS13 4BL



Forever Thoughts Ltd

The Complete Memorial & Floral Tribute Specialists

An extensive range of bespoke memorials to help you find the perfect tribute

T: 0113 249 67 15 E: f.hughes@foreverthoughtsltd.com A: Hepton Court, York Road, Leeds LS9 6PW

Over 25 years of experience



WINDOWS, DOORS, BI-FOLDS, ORANGERIES, ROOFLINE, CONSERVATORY ROOF REPLACEMENTS & GARDEN ROOMS

**ELMHURST**LOVE YOUR *Home***FENSA**
Registered CompanyINSURANCE
BACKED
GUARANTEE*the***ultimate**[®]
collection*Ts & Cs apply - Ask for written details
**TAILORED
FINANCE
PACKAGES**
TO HELP
YOU SPREAD
COSTS**Pop into our showroom for a coffee** and see your windows come to life with our price point softwareContact us via email sales@elmhurst-windows.co.uk
or call us on **0113 264 4505**
or visit www.elmhurst-windows.co.ukVISIT OUR EAST LEEDS SHOWROOM - MONDAY TO SATURDAY 10AM TO 4PM
3 AUSTHORPE VIEW, COLTON ROUNDABOUT, LEEDS LS15 8NN

Contact us via

**WE STILL BEAT ANY GENUINE QUOTE**